

# Hope Cottage Crafts <sup>07/2009</sup>

---



# Hope Cottage Crafts <sup>07/2009</sup>

ebook

A SUFFOLK MEDLEY



WRITTEN BY  
D. ROBERTS

A Suffolk Medley - ebook

Model: ebook001

This booklet which has been converted to an ebook has a collection of poems and two short stories written by Doreen Roberts who loves living in and around the Suffolk area. Some of these are humorous, others more thought provoking.

£1.75

# Hope Cottage Crafts <sup>07/2009</sup>

New

A SUFFOLK MEDLEY

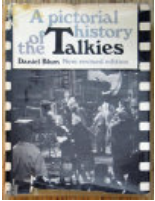


DESIGNED BY  
D. ROBERTS

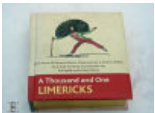
|   |
|---|
| A Suffolk Medley Booklet                          |
| Model: suffmedb                                   |
| <i>Manufacturer: Hope Cottage Crafts</i>          |
| Lovely booklet of suffolk poems by Doreen Roberts |
| £3.00   |

# Hope Cottage Crafts <sup>07/2009</sup>

Used



|                                    |
|------------------------------------|
| A Pictorial History of The Talkies |
| Model: 1071                        |
| ISBN 0-86112-972-5                 |
| Publisher Hamlyn Publishing Group  |
| Date 1968                          |
| Hardback                           |
| Good condition                     |
| With dust jacket (poor condition)  |
| Size approx. 9.5" x 12.25"         |
| £9.50                              |



|  |
|--|
| A Thousand and One Limericks   |
| Model: 834   |
| This lovely little book by 'BOOK BLOCKS' is in good condition, edges of pages are gilt and in immaculate condition. Edited selection by Marcus Clapham & Rosemary Gray Typeset by Antony Gray ISBN 1904633218 Printed and bound in China This one appears to be different to most having 'There Was An Old Person Of Dutton' on the front cover and is in red & white. |
| Size :- approx. 4.5" x 4.5" x 1.5" thick   |
| £5.00  |

# Hope Cottage Crafts <sup>07/2009</sup>



Arlot On Cricket - His Writings On The Game

Model: 815

An interesting book for all serious fans This hard back book is in good clean condition. Text only (no illustrations) Size:- approx. 9.5" x 6.5" ISBN 0-00-218082-0 Published 1984 by Willow Books

£7.00



Ben Hur By Lew Wallace Published by Fredrick Warne & Co. 1888

Model: 1040

This hardback book is in fair condition, includes black and white illustrations.

Cover red with gilt highlights.

Pages are clean & free from dogears, cover has slight ware and tare.

Size approx. 5.25" x 8.25"

£6.50



BOTTICELLI - The Faber Gallery - Paperback Book

Model: 1084

Introduction and notes by Stephen Spender. 10 tipped-in colour prints

Conditon Dust cover = poor - Book = good (although spine string broken)

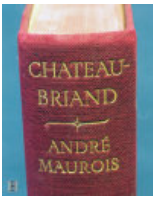
Size approx. 9.75" x 12.25"

£6.00

# Hope Cottage Crafts <sup>07/2009</sup>



|   |
|---|
| Cantona On Cantona                      |
| Model: 1070                             |
| ISBN 0233-99045-3                       |
| Hardback                                |
| Publisher Manchester United Books       |
| Date 1985                               |
| fare condition (couple of small gouges) |
| No dust jacket                          |
| Size approx. 9" x 11.75"                |
| £2.50                                   |



|   |
|---|
| Chateaubriand by Andre Maurois  |
| Model: 1047   |
| Published by Jonathan Cape, London 1938.  |
| Translated by Vera Fraser.  |
| 3 Portrait and a fold out genealogical tree.  |
| Gilt title on red cloth boards with top edge red.   |
| Very clean.   |
| Excellent biography of the writer and politician.. First Edition. Cloth. Very Good No Jacket. |
| Size approx. 6.25" x 9"   |
| £12.00  |

# Hope Cottage Crafts <sup>07/2009</sup>



Collection of 9 Enid Blyton Books

Model: 270739

Collection includes

The Treasure Hunters      0 00163214 0  
Bed Time Stories          361 01524 0  
Hurrah For The Circus      603 03292 3  
Chimney Corner Stories    603 03256 7  
The Saucy Jane Family      1953 (a few pictures have been hand coloured)  
Five Go Off To Camp        0 34004003 3  
Five Go Off In A Caravan    340 04001 7  
Five On A Secret Trail      0 340 04241 9  
Five Go To Demon's Rock    034 010433 3

All books in reasonable condition.

£15.00



# Hope Cottage Crafts <sup>07/2009</sup>



David copperfiled, Nonesuch Dickens series 0-7156-3519-0

Model: book23453214

David Copperfiled, Nonesuch Dickens series ISBN 5635190 Published 2005

Duckworth & Co. LTD

Book has some slight bending of several leaves (no tearing) beleived to have had something leaning against it.

Still has origional plastic dust cover, good clean edition.

Note:- Below sample taken from Duckworth's Web Site

Originally published as part of the extraordinary 24-volume collection of Dickens work published by the Nonesuch Press in 1936, which used text taken from the 1867 Chapman and Hall edition the last collection of his work to have been overseen by Dickens himself, this edition of David Copperfield reproduces the original illustrations by Phiz.

David Copperfield (1849), written at a prosperous and content time in Dickens life, became the fictional account of his life story, a romantic autobiography charting the young man's evolution from his troubled formative years to an affluent and happy adulthood.

Once again, issues of class and the differences between public and private standards (represented in the corruption of the wealthy and brilliant Steerforth) are studied, and the power and exploitation of the industrial world are exposed and damned, Classic Dickensian characters here include Mr Murdstone, Copperfields evil guardian and owner of the wine bottling factory where David makes his living under appalling conditions the snake like Uriah Heap who's vanity leads him to cruelty; Mr Micawber, one of literature's funniest characters and the kind, generous Peggottys, representing all that is good, even in the face of adversity. Little Em'ly provides an ill-treated character with whom the reader can sympathise. This was Dicken's favourite novel.

Size approx. 7" x 10.5"

£9.50



Great World War II Air Stories - ISBN 0 86273 046 5

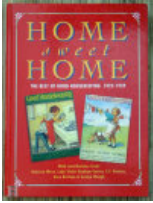
Model: 1039

This hardback book by Guy Gibbson, Richard Hillary & Paul Brickhill are true stories of the RAF during the second world war. Second edition.

Size approx. 6" x 8.5"

£4.50

# Hope Cottage Crafts <sup>07/2009</sup>



Home Sweet Home The Best of Good Housekeeping 1922 - 1939

Model: 1083

ISBN 0-7529-0033-1

Hardback

Publisher Leopard Books

1992

Good condition

Very interesting book.

No dust jacket

Size approx. 9" x 12"

£10.00



In Tune with The Infinite by Ralph Waldo Trine 1901

Model: 1041

This hardback book is in fair condition, some staining to the cover, pages are slightly dull around edges.

This book by - Ralph Waldo Trine about the fullness of peace power and plenty was published in London by George Bell & Sons in 1901.

Size :- 5" x 8.25"

£4.00

# Hope Cottage Crafts <sup>07/2009</sup>

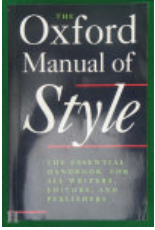


|                               |
|-------------------------------|
| John McGovren Glamorous Cars  |
| Model: 1073                   |
| ISBN 1-85076-035-7            |
| Good condition                |
| Publisher Apple Press Limited |
| Date                          |
| Hardback                      |
| Good condition                |
| With dust jacket              |
| Size approx. 9" x 11.5"       |
| £4.50                         |

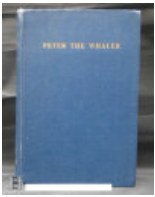


|   |
|---|
| Ladybird series 401 Complete set of 14 Books  |
| Model: 645  |
| This lovely collection is in very good condition, clean with just slight rubbing of top and bottom of spine. (have been well cared for)Circa early 1970'sA perfect addition to anyones collection-----This popular series of animal stories in rhyme was written by A J MacGregor. The stories were accompanied with wonderful full-page, colour illustrations by the author and verses were set by W Perring.The series was an immediate success with young readers who were introduced to the likes of Downy Duckling, Piggly, The Five Little Kittens, Ginger and many other endearing animal characters.REPRINT HISTORYWhen Wills & Hepworth stopped producing books with dust-wrappers in 1965 only 8 of the original 18 titles from series 401 continued to be issued as matt editions. The 8 titles that continued to be reprinted were:Bunnikin's Picnic Party Ginger's Adventures Smoke and Fluff Piggly Plays Truant Downy Duckling Lost at the Fair The Green Umbrella Five Little Kittens.However, for some reason, in the early 1970s a further 6 of the original titles were reissued again - this time the covers changed for the last time to full pictorial covers - the titles were:The Runaway Bunny's First Birthday Bob Bushtail's Adventure Mr Badger to the Rescue The First Day of the Holidays The Bunney-Fluff's Moving Day |
| £25.00  |

# Hope Cottage Crafts <sup>07/2009</sup>

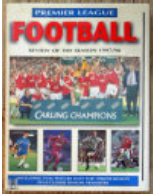


|   |
|---|
| Oxford Manual of Style  |
| Model: 270736   |
| The essential handbook for all writers, editors and publishers. By R M Ritter Condition - good Size 6" x 9" |
| £7.00   |



|   |
|---|
| Peter The Whaler by W H G Kingston  |
| Model: book23232323   |
| Peter The Whaler<br><br>by W H G Kingston<br><br>Including some b/w illustrations<br><br>1946 edition<br><br>Good condition other than shelf wear top and bottom.<br><br>Size Approx.<br><br>7.5" h x 5" w x 1" d |
| £5.00   |

# Hope Cottage Crafts <sup>07/2009</sup>



Premier League Football Review of The Season 1997/1998

Model: 1082

ISBN 1-902616-146

Good condition (small tear on dust cover)

Publisher Parkgate Books LTD

Date 1998

Hardback

Good condition

With dust jacket

Size approx. 9.5" x 12.25"

£3.50



Reflections On Madison County by Mark F Heffron

Model: 1038

This interesting hardback is in excellent condition. with dust jacket, Red linen cover in perfect condition with gilt lettering.

Printed on back:-

A romantic journey through Madison County with photographs poems & prose

ISBN 1-85732-544-3

Size approx. 8.5" x 6.25"

£3.00

# Hope Cottage Crafts <sup>07/2009</sup>



Richard's Ultimate Bicycle Book

Model: 1080

ISBN 0-86318-659-9

Publisher Dorling Kindasley

Date 1992

Hardback

Good condition

with dust jacket (slight tear)

With over 700 photographs, this book shows every type of bicycle including the anatomy, the action and the rider of each bike. The book features all the most popular bikes of today, from tandems to mountain bikes, and from professional racers to the more esoteric bikes of the future. Annotated photographs and text reveal the most efficient way of riding each type of bike and explain the function of all the moving parts of a bicycle. Professional tips and step-by-step photographs show how to maintain each bicycle.

Size approx. 8.75" x 11.25"

£8.00

# Hope Cottage Crafts <sup>07/2009</sup>



Royal Family Yearbook

Model: 1074

ISBN 0-86283-019-2

Publisher Pedigree Books

Date 1981/82

Hardback

Good condition

With dust jacket

Size approx. 9.75" x 11".75

£2.50



Shoot Monthly Anual 2003

Model: 1081

ISBN 1-902836-90-1

Publisher Pedigree Books

Date 2003

Hardback

Good condition

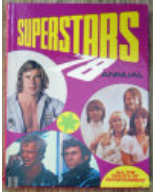
no dust jacket

Pictured David Becham & Michael Owen on front cover

Size approx. 9" x 12"

£3.50

# Hope Cottage Crafts <sup>07/2009</sup>



Superstars 78 Annual

Model: 1069

ISBN 7235-0422-9

Publisher World Distributors

Date 1978

Softback

Good condition ( pages good but cover slightly chewed by a puppy at corners)

no dust jacket

Size approx. 8" x 10.75"

£5.00



Superstars of The World Cup 2002

Model: 1075

ISBN 0-75257-907-x

Publisher Parragon

Date 2002

Softback

Fare condition (slightly squashed and creased to back near spine but intact)

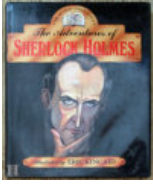
no dust jacket

The esential compendium to South Korea & Japan

Size approx. 8.5" x 10.75"

£4.50

# Hope Cottage Crafts <sup>07/2009</sup>



The Adventures of Sherlock Holmes

Model: 1076

ISBN 0-86112-972-5

Publisher Brimas Books of Newmarket

Date 1993

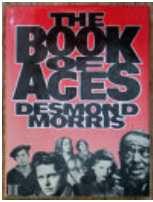
Hardback

Good condition

With dust jacket

Size approx. 9" x 11.5"

£7.50



The Book of Ages - Desmond Morris

Model: 1077

ISBN 0-224-02166-4

Publisher Jonathan Cape LTD

Date 1983

Hardback

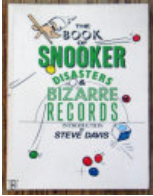
Good condition

With dust jacket

Size approx. 7.75" x 11"

£5.00

# Hope Cottage Crafts <sup>07/2009</sup>



The Book of Snooker Disasters & Bizarre Records - Steve Davis

Model: 1068

ISBN 1-85291-068-2

Publisher Lennard Publishing

Date 1989

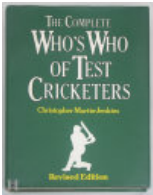
Paperback

Good condition

No dust jacket

Size approx. 7" x 9.75"

£2.50



The Complete Who's Who of Test Cricket

Model: 816

This hard back copy of "The Complete Who's Who of Test Cricket- Revised Edition" by Christopher Martin-Jenkins is in a good clean condition. Published by Orbis Publishing of London. Some photographic illustrations. Size:- approx. 10" x 8" ISBN 0-85613-487-2

£9.00

# Hope Cottage Crafts <sup>07/2009</sup>



The Duchovny Files - Paul Mitchell

Model: 1078

ISBN 0-553-50591-2

Publisher Bantam Books Ltd

Date 1996

Paperback

Good condition

No dust jacket

Size approx. 6.75" x 9.75"

£2.50



The Falklands War - 14 weekly parts in folder (complete set)

Model: 1079

ISBN

Publisher Marshall Cavendish Publications

Date 1982

Magazines in folder

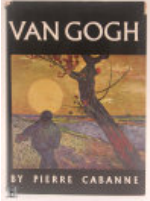
Good condition

No dust jacket

Folder Size approx. 10" x 12.25"

£20.00

# Hope Cottage Crafts <sup>07/2009</sup>



Van Gogh by Pierre Cabanne

Model: 830

This 1963 edition from Thames & Hudson is in good condition, dust cover slightly dog-eared. Has a red linen cover with the word Vincent in blue. Well illustrated in colour and black and white.

Size approx. 6.25" x 8.5"

£8.00



Vogue Complete Diet & Exercise

Model: 1072

ISBN

Publisher Octopus Books

Date 1984

Hardback

Good condition

No dust jacket

Size approx. 8.75" x 11.25"

£3.50

## Cards -/- Postcards



|   |
|---|
| 12 Postcards Depicting Japanese Birds & Plants  |
| Model: 519  |
| <i>Manufacturer: Hope Cottage Crafts</i>  |
| 12 postcards Set 1 of 1 These postcards depict Japanese Birds and flowers Taken from vintage prints. Cards are printed on a6 size 280 - 300gsm ultra smooth fine art card using epon K3 Vivid Magenta ink, printed on reverse as postcards, hand cut and packaged in a cellophane wrapper |
| £5.40   |



|  |
|--|
| British Birds by Doreen Roberts Set 1  |
| Model: 520   |
| <i>Manufacturer: Hope Cottage Crafts</i>   |
| 8 postcards Set 1 of 2 These postcards prints are taken from original watercolours showing various types of bird, by D.M Roberts a local East Suffolk artist and author Cards are printed on a6 size 280 - 300gsm ultra smooth fine art card using epon K3 Vivid Magenta ink, printed on reverse as postcards, hand cut and packaged in a cellophane wrapper |
| £3.60  |



|  |
|--|
| British Birds by Doreen Roberts Set 2  |
| Model: 521   |
| <i>Manufacturer: Hope Cottage Crafts</i>   |
| 8 postcards Set 2 of 2 These postcards prints are taken from original watercolours showing various types of bird, by D.M Roberts a local East Suffolk artist and author Cards are printed on a6 size 280 - 300gsm ultra smooth fine art card using epon K3 Vivid Magenta ink, printed on reverse as postcards, hand cut and packaged in a cellophane wrapper |
| £3.60  |

# Hope Cottage Crafts <sup>07/2009</sup>



Postcards Depicting Art Deco Fashion Set 1

Model: 503

*Manufacturer: Hope Cottage Crafts*

9 postcards Set 1 of 6 These postcards depict Art Deco fashion. First 3 sets are general fashion whilst last 3 sets are costumes of various nationalities Cards are printed on a6 size 280 - 300gsm ultra smooth fine art card using epon K3 Vivid Magenta ink, printed on reverse as postcards, hand cut and packaged in a cellophane wrapper

£4.05



Postcards Depicting Art Deco Fashion Set 2

Model: 504

*Manufacturer: Hope Cottage Crafts*

9 postcards Set 2 of 6 These postcards depict Art Deco fashion. First 3 sets are general fashion whilst last 3 sets are costumes of various nationalities Cards are printed on a6 size 280 - 300gsm ultra smooth fine art card using epon K3 Vivid Magenta ink, printed on reverse as postcards, hand cut and packaged in a cellophane wrapper

£4.05



Postcards Depicting Art Deco Fashion Set 3

Model: 505

*Manufacturer: Hope Cottage Crafts*

9 postcards Set 3 of 6 These postcards depict Art Deco fashion. First 3 sets are general fashion whilst last 3 sets are costumes of various nationalities Cards are printed on a6 size 280 - 300gsm ultra smooth fine art card using epon K3 Vivid Magenta ink, printed on reverse as postcards, hand cut and packaged in a cellophane wrapper

£4.05

# Hope Cottage Crafts <sup>07/2009</sup>



|  |
|--|
| Postcards Depicting Art Deco Fashion Set 4   |
| Model: 506   |
| <i>Manufacturer: Hope Cottage Crafts</i>   |
| 9 postcards Set 5 of 6 These postcards depict Art Deco fashion. First 3 sets are general fashion whilst last 3 sets are costumes of various nationalities Cards are printed on a6 size 280 - 300gsm ultra smooth fine art card using epon K3 Vivid Magenta ink, printed on reverse as postcards, hand cut and packaged in a cellophane wrapper |
| £3.60  |



|  |
|--|
| Postcards Depicting Art Deco Fashion Set 5   |
| Model: 507   |
| <i>Manufacturer: Hope Cottage Crafts</i>   |
| 8 postcards Set 5 of 6 These postcards depict Art Deco fashion. First 3 sets are general fashion whilst last 3 sets are costumes of various nationalities Cards are printed on a6 size 280 - 300gsm ultra smooth fine art card using epon K3 Vivid Magenta ink, printed on reverse as postcards, hand cut and packaged in a cellophane wrapper |
| £3.60  |



|  |
|--|
| Postcards Depicting Art Deco Fashion Set 6   |
| Model: 508   |
| <i>Manufacturer: Hope Cottage Crafts</i>   |
| 9 postcards Set 6 of 6 These postcards depict Art Deco fashion. First 3 sets are general fashion whilst last 3 sets are costumes of various nationalities Cards are printed on a6 size 280 - 300gsm ultra smooth fine art card using epon K3 Vivid Magenta ink, printed on reverse as postcards, hand cut and packaged in a cellophane wrapper |
| £3.60  |

# Hope Cottage Crafts <sup>07/2009</sup>



Postcards depicting Native Americans & Landscapes Set 1

Model: 512

*Manufacturer: Hope Cottage Crafts*

8 postcards Set 1 of 7 These postcards depict Native American people and landscapes Taken from vintage prints Cards are printed on a6 size 280 - 300gsm ultra smooth fine art card using epon K3 Vivid Magenta ink, printed on reverse as postcards, hand cut and packaged in a cellophane wrapper

£3.60



Postcards depicting Native Americans & Landscapes Set 2

Model: 513

*Manufacturer: Hope Cottage Crafts*

8 postcards Set 2 of 7 These postcards depict Native American people and landscapes Taken from vintage prints Cards are printed on a6 size 280 - 300gsm ultra smooth fine art card using epon K3 Vivid Magenta ink, printed on reverse as postcards, hand cut and packaged in a cellophane wrapper

£3.60



Postcards depicting Native Americans & Landscapes Set 3

Model: 514

*Manufacturer: Hope Cottage Crafts*

8 postcards Set 3 of 7 These postcards depict Native American people and landscapes Taken from vintage prints Cards are printed on a6 size 280 - 300gsm ultra smooth fine art card using epon K3 Vivid Magenta ink, printed on reverse as postcards, hand cut and packaged in a cellophane wrapper

£3.60

# Hope Cottage Crafts <sup>07/2009</sup>



|   |
|---|
| Postcards depicting Native Americans & Landscapes Set 4   |
| Model: 515  |
| <i>Manufacturer: Hope Cottage Crafts</i>  |
| 8 postcards Set 4 of 7 These postcards depict Native American people and landscapes Taken from vintage prints Cards are printed on a6 size 280 - 300gsm ultra smooth fine art card using epson K3 Vivid Magenta ink, printed on reverse as postcards, hand cut and packaged in a cellophane wrapper |
| £3.60   |



|   |
|---|
| Postcards depicting Native Americans & Landscapes Set 5   |
| Model: 516  |
| <i>Manufacturer: Hope Cottage Crafts</i>  |
| 8 postcards Set 5 of 7 These postcards depict Native American people and landscapes Taken from vintage prints Cards are printed on a6 size 280 - 300gsm ultra smooth fine art card using epson K3 Vivid Magenta ink, printed on reverse as postcards, hand cut and packaged in a cellophane wrapper |
| £3.60   |



|   |
|---|
| Postcards depicting Native Americans & Landscapes Set 6   |
| Model: 517  |
| <i>Manufacturer: Hope Cottage Crafts</i>  |
| 8 postcards Set 6 of 7 These postcards depict Native American people and landscapes Taken from vintage prints Cards are printed on a6 size 280 - 300gsm ultra smooth fine art card using epson K3 Vivid Magenta ink, printed on reverse as postcards, hand cut and packaged in a cellophane wrapper |
| £3.60   |

# Hope Cottage Crafts <sup>07/2009</sup>



|  |
|--|
| Postcards depicting Native Americans & Landscapes Set 7  |
| Model: 518   |
| <i>Manufacturer: Hope Cottage Crafts</i>   |
| 8 postcards Set 7 of 7 These postcards depict Native American people and landscapes Taken from vintage prints Cards are printed on a6 size 280 - 300gsm ultra smooth fine art card using epon K3 Vivid Magenta ink, printed on reverse as postcards, hand cut and packaged in a cellophane wrapper |
| £3.60  |



|  |
|--|
| Postcards of British naval dress circa 1748 - 1939   |
| Model: 556   |
| <i>Manufacturer: Hope Cottage Crafts</i>   |
| 12 postcards Set 1 of 1 These postcards depict British naval dress circa 1748 - 1939 Prints are taken from original water colours which are beautifully painted Cards are printed on a6 size 280 - 300gsm ultra smooth fine art card using epon K3 Vivid Magenta ink, printed on reverse as postcards, hand cut and packaged in a cellophane wrapper |
| £5.40  |



|   |
|---|
| Postcards of Haiku Poem and Photograph Set 1  |
| Model: 509  |
| <i>Manufacturer: Hope Cottage Crafts</i>  |
| 8 postcards Set 1 of 3 These unusual postcards are photographs complimented by Haiku poems Photographs by T.R.Roberts - Haiku poems by D.M.Roberts Cards are printed on a6 size 280 - 300gsm ultra smooth fine art card using epon K3 Vivid Magenta ink, printed on reverse as postcards, hand cut and packaged in a cellophane wrapper |
| £3.60   |

# Hope Cottage Crafts <sup>07/2009</sup>



## Postcards of Haiku Poem and Photograph Set 2

Model: 510

*Manufacturer: Hope Cottage Crafts*

8 postcards Set 2 of 3 These unusual postcards are photographs complimented by Haiku poems Photographs by T.R.Roberts - Haiku poems by D.M.Roberts Cards are printed on a6 size 280 - 300gsm ultra smooth fine art card using epon K3 Vivid Magenta ink, printed on reverse as postcards, hand cut and packaged in a cellophane wrapper

£3.60



## Postcards of Haiku Poem and Photograph Set 3

Model: 511

*Manufacturer: Hope Cottage Crafts*

8 postcards Set 3 of 3 These unusual postcards are photographs complimented by Haiku poems Photographs by T.R.Roberts - Haiku poems by D.M.Roberts Cards are printed on a6 size 280 - 300gsm ultra smooth fine art card using epon K3 Vivid Magenta ink, printed on reverse as postcards, hand cut and packaged in a cellophane wrapper

£3.60



## Postcards of Suffolk Scenes Set 1

Model: 557

*Manufacturer: Hope Cottage Crafts*

postcards Set 1 of 4 These postcards depict various East Suffolk scenes Photographs by T.R.Roberts (copyright) Cards are printed on a6 size 280 - 300gsm ultra smooth fine art card using epon K3 Vivid Magenta ink, printed on reverse as postcards, hand cut and packaged in a cellophane wrapper

£3.60

# Hope Cottage Crafts <sup>07/2009</sup>



## Postcards of Suffolk Scenes Set 2

Model: 558

*Manufacturer: Hope Cottage Crafts*

postcards Set 2 of 4 These postcards depict various East Suffolk scenes Photographs by T.R.Roberts (copyright) Cards are printed on a6 size 280 - 300gsm ultra smooth fine art card using epon K3 Vivid Magenta ink, printed on reverse as postcards, hand cut and packaged in a cellophane wrapper

£3.60



## Postcards of Suffolk Scenes Set 3

Model: 559

*Manufacturer: Hope Cottage Crafts*

postcards Set 3 of 4 These postcards depict various East Suffolk scenes Photographs by T.R.Roberts (copyright) Cards are printed on a6 size 280 - 300gsm ultra smooth fine art card using epon K3 Vivid Magenta ink, printed on reverse as postcards, hand cut and packaged in a cellophane wrapper

£3.60



## Postcards of Suffolk Scenes Set 4

Model: 560

*Manufacturer: Hope Cottage Crafts*

postcards Set 4 of 4 These postcards depict various East Suffolk scenes Photographs by T.R.Roberts (copyright) Cards are printed on a6 size 280 - 300gsm ultra smooth fine art card using epon K3 Vivid Magenta ink, printed on reverse as postcards, hand cut and packaged in a cellophane wrapper

£3.60

# Hope Cottage Crafts <sup>07/2009</sup>



## Postcards of Various Wild Life Prints Set 1

Model: 522

*Manufacturer: Hope Cottage Crafts*

8 postcards Set 1 of 12 These postcards depict various wild life, taken from vintage prints they include some rare & extinct species. Computer restored from damaged vintage prints Cards are printed on a6 size 280 - 300gsm ultra smooth fine art card using epon K3 Vivid Magenta ink, printed on reverse as postcards, hand cut and packaged in a cellophane wrapper

£3.60



## Postcards of Various Wild Life Prints Set 10

Model: 553

*Manufacturer: Hope Cottage Crafts*

8 postcards Set 10 of 12 These postcards depict various wild life, taken from vintage prints they include some rare & extinct species. Computer restored from damaged vintage prints Cards are printed on a6 size 280 - 300gsm ultra smooth fine art card using epon K3 Vivid Magenta ink, printed on reverse as postcards, hand cut and packaged in a cellophane wrapper

£3.60



## Postcards of Various Wild Life Prints Set 11

Model: 554

*Manufacturer: Hope Cottage Crafts*

8 postcards Set 11 of 12 These postcards depict various wild life, taken from vintage prints they include some rare & extinct species. Computer restored from damaged vintage prints Cards are printed on a6 size 280 - 300gsm ultra smooth fine art card using epon K3 Vivid Magenta ink, printed on reverse as postcards, hand cut and packaged in a cellophane wrapper

£3.60

# Hope Cottage Crafts <sup>07/2009</sup>



## Postcards of Various Wild Life Prints Set 12

Model: 555

*Manufacturer: Hope Cottage Crafts*

8 postcards Set 12 of 12 These postcards depict various wild life, taken from vintage prints they include some rare & extinct species. Computer restored from damaged vintage prints Cards are printed on a6 size 280 - 300gsm ultra smooth fine art card using epon K3 Vivid Magenta ink, printed on reverse as postcards, hand cut and packaged in a cellophane wrapper

£3.60



## Postcards of Various Wild Life Prints Set 2

Model: 545

*Manufacturer: Hope Cottage Crafts*

8 postcards Set 2 of 12 These postcards depict various wild life, taken from vintage prints they include some rare & extinct species. Computer restored from damaged vintage prints Cards are printed on a6 size 280 - 300gsm ultra smooth fine art card using epon K3 Vivid Magenta ink, printed on reverse as postcards, hand cut and packaged in a cellophane wrapper

£3.60



## Postcards of Various Wild Life Prints Set 3

Model: 547

*Manufacturer: Hope Cottage Crafts*

8 postcards Set 3 of 12 These postcards depict various wild life, taken from vintage prints they include some rare & extinct species. Computer restored from damaged vintage prints Cards are printed on a6 size 280 - 300gsm ultra smooth fine art card using epon K3 Vivid Magenta ink, printed on reverse as postcards, hand cut and packaged in a cellophane wrapper

£3.60

# Hope Cottage Crafts <sup>07/2009</sup>



|  |
|--|
| Postcards of Various Wild Life Prints Set 4  |
| Model: 547   |
| <i>Manufacturer: Hope Cottage Crafts</i>   |
| 8 postcards Set 4 of 12 These postcards depict various wild life, taken from vintage prints they include some rare & extinct species. Computer restored from damaged vintage prints Cards are printed on a6 size 280 - 300gsm ultra smooth fine art card using epon K3 Vivid Magenta ink, printed on reverse as postcards, hand cut and packaged in a cellophane wrapper |
| £3.60  |



|  |
|--|
| Postcards of Various Wild Life Prints Set 5  |
| Model: 548   |
| <i>Manufacturer: Hope Cottage Crafts</i>   |
| 8 postcards Set 5 of 12 These postcards depict various wild life, taken from vintage prints they include some rare & extinct species. Computer restored from damaged vintage prints Cards are printed on a6 size 280 - 300gsm ultra smooth fine art card using epon K3 Vivid Magenta ink, printed on reverse as postcards, hand cut and packaged in a cellophane wrapper |
| £3.60  |



|  |
|--|
| Postcards of Various Wild Life Prints Set 6  |
| Model: 549   |
| <i>Manufacturer: Hope Cottage Crafts</i>   |
| 8 postcards Set 6 of 12 These postcards depict various wild life, taken from vintage prints they include some rare & extinct species. Computer restored from damaged vintage prints Cards are printed on a6 size 280 - 300gsm ultra smooth fine art card using epon K3 Vivid Magenta ink, printed on reverse as postcards, hand cut and packaged in a cellophane wrapper |
| £3.60  |

# Hope Cottage Crafts <sup>07/2009</sup>



Postcards of Various Wild Life Prints Set 7

Model: 550

*Manufacturer: Hope Cottage Crafts*

8 postcards Set 7 of 12 These postcards depict various wild life, taken from vintage prints they include some rare & extinct species. Computer restored from damaged vintage prints Cards are printed on a6 size 280 - 300gsm ultra smooth fine art card using epon K3 Vivid Magenta ink, printed on reverse as postcards, hand cut and packaged in a cellophane wrapper

£3.60



Postcards of Various Wild Life Prints Set 8

Model: 551

*Manufacturer: Hope Cottage Crafts*

8 postcards Set 8 of 12 These postcards depict various wild life, taken from vintage prints they include some rare & extinct species. Computer restored from damaged vintage prints Cards are printed on a6 size 280 - 300gsm ultra smooth fine art card using epon K3 Vivid Magenta ink, printed on reverse as postcards, hand cut and packaged in a cellophane wrapper

£3.60



Postcards of Various Wild Life Prints Set 9

Model: 552

*Manufacturer: Hope Cottage Crafts*

8 postcards Set 9 of 12 These postcards depict various wild life, taken from vintage prints they include some rare & extinct species. Computer restored from damaged vintage prints Cards are printed on a6 size 280 - 300gsm ultra smooth fine art card using epon K3 Vivid Magenta ink, printed on reverse as postcards, hand cut and packaged in a cellophane wrapper

£3.60

# Hope Cottage Crafts <sup>07/2009</sup>

China - Glass -/- China



|  |
|--|
| 5 Plates pertaining to Norfolk England   |
| Model: 1062  |
| This collection includes :-<br><br>1 Plate with Norfolk map<br><br>1 Plate Titled Gt. Yarmouth<br><br>3 Plates of norfolk Wild Fowl<br><br>No Markings - Just a nice group of plates |
| £5.00  |



|   |
|---|
| Antique Czechoslovakia Lustreware Jug   |
| Model: 1021   |
| This cream and orange lustre jug with black banding, is very attractive, it has some slight ware on black banding.<br><br>Marks on base state Made In Czechoslovakia No.3<br><br>Size:- 6" high x 4.5" diameter at base |
| £9.00   |

# Hope Cottage Crafts <sup>07/2009</sup>



## Beautiful Vintage Japanese Floral China Vase

Model: 1042

This Colourful vase decorated with a floral design with highlights of gilt and has a Japanese stamp on base, stands approx. 10" tall and is 4.75" at widest point.

£8.00



## Blue & White China Elephant Money Box

Model: 1026

This cute little blue & white china money box is in the style of an Indian elephant is in really good condition

Size 4.5" high x 5" long.

£8.00



## Blue & White Egg Shaped Porcelain Ornament

Model: 1022

This quaint porcelain egg shaped ornament in blue and white with a crazed finish effect stands approx. 4.5" high x 3.5" at widest point.

£4.50



## Blue & White Porcelain Trinket Box Decorated With Floral Design

Model: 1023

This attractive trinket box and lid are in very good condition, white decorate with deep blue floral design.

4" square x 3" tall

£7.95

# Hope Cottage Crafts <sup>07/2009</sup>



Bradex Plate Ruslan & Ludmilla No. 60-v25-1.1

Model: 610

This bradex plate from the Russian Collection 'Ruslan & Ludmilla' No. 60-v25-1.1 No Box. all original paperwork including certificate of authenticity Mint Condition Size 7.75"

£15.00



Bradex Plate Tutankhamun No. 15-075-1.1

Model: 609

This bradex plate from the Tutankhamun collection 'Tutankhamun & His Princess' No. 15-075-1.1 This is the first limited edition plate by Egyptian artist Nageh Nassif Bichay With original box (slightly damaged) Plus all original paperwork including certificate of authenticity Mint Condition Size 8.5"

£15.00



Colourful Oriental Bone China Coffee Set Circa 1920's

Model: 161

This elegant bone china coffee set is hand painted in the Japanese style, consisting of 6 cups 6 saucers, coffee pot with lid, lidded sugar bowl and cream jug. Early 20th century In excellent condition Size Cups 2.25" high x 2.25" Coffee Pot 6.75" tall including lid

£25.00



Czecho-Slovakia Victoria Combined Plate-Saucer + Cup

Model: 1007

This delicate piece of bone china is decorated with heather tied by ribbon, edged with gilt. In good condition no chips just slight ware of gilt on inner rim of saucer. Is marked as shown Czecho-Slovakia Victoria with crown numbered 258 Size :- approx.

Length 8" x width 5 x height of cup 2" width of cup 3.5"

£15.00

# Hope Cottage Crafts <sup>07/2009</sup>



Davenport Plate Badger Family 1991 Limited Edition No. 1726A

Model: 1054

This plate is one of a set by Davenport 'Badger Family' 1991 Limited Edition No. 1726A

size :- 8.5"

£6.50



Davenport Plate Dormice in The Hedgerow 1991 Limited Edition No. 1019A

Model: 1056

This plate is one of a set by Davenport 'Dormice in The Hedgerow' 1991 Limited Edition No. 1019A

size :- 8.5"

£6.50



Davenport Plate Fox in The Barn 1991 Limited Edition No. 567A

Model: 1057

This plate is one of a set by Davenport 'Fox in The Barn' 1991 Limited Edition No. 567A

size :- 8.5"

£56.50



Davenport Plate Otters at Play 1991 Limited Edition No. 2996A

Model: 1055

This plate is one of a set by Davenport 'Otters at Play' 1991 Limited Edition No. 2996A

size :- 8.5"

£6.50

# Hope Cottage Crafts <sup>07/2009</sup>



## Elegant China Plate Decorated With Peacocks

Model: 1025

This decorative plate is of a peacock surrounded by a floral design, orange, blue & gold colouring.

Japanese marking on back.

Size 6.6" diameter

£2.50



## Large Blue & White Vase

Model: 1033

This lovely peice of china is in exceleent condition, decorated with fish and a floral design in a Japanese style.

Stands approx. 12" high and 7" at widest point.

Un Marked

£12.00



## Miniature Coffee Set In Presentation Box

Model: 1027

Beautiful box set of two cups and saucers, coffee pot, milk and sugar bowl. Turquoise and floral design in pink, blue and white with gold edging. All stands on matching tray.

Box measures 7.5" square

£15.00

# Hope Cottage Crafts <sup>07/2009</sup>



Miniature Procelaine Cup & Saucer decorated Rose & Gilt

Model: 700

Miniature Procelaine Cup & Saucer decorated Rose & Gilt This little peice is tiny as picture shows, Has no markings and is in excellent condition.

£2.50



Pair of Cute Porcelain Dalmation figures

Model: 1053

These cute little chaps stand 5.5" & 4.5" tall. Spotted with gren flowers they are wearing red neck ties.

Slight mark in the glaze of the tall one, (probably caused by the firing)

£3.50



Royal Doulton China Plate 'The Candle Maker' No. 8714A

Model: 1058

This plate is in excelent condition from from the series entitled 'Old Country Crafts'

Plate no. 8714A

Size approx. :- 8.5" diameter

£6.50

# Hope Cottage Crafts <sup>07/2009</sup>



|  |
|--|
| Royal Doulton China Plate 'The Embroidress' No. 539B                               |
| Model: 1059  |
| This plate is in excellent condition from the series entitled 'Old Country Crafts' |
| Plate no. 539B   |
| Size approx. :- 8.5" diameter  |
| £6.50  |



|   |
|---|
| Royal Doulton seriesware plate d6473 Vermillion Lake  |
| Model: 762  |
| Royal Doulton seriesware plate d6473 Vermillion Lake, Mount Rundle, Banff In excellent condition this plate is approx. "10 diameter |
| £9.99   |



|   |
|---|
| Wedgwood Jasper Ware Pale Blue & White Lighter & Ashtray  |
| Model: 156  |
| This pair are in very good condition (state of gas lighter unknown) Both are decorated with Roman scenes in pale blue and white. Lighter 3.5" Diameter 2.75" Height Ashtray 4.5" Diameter |
| £12.00  |



|  |
|--|
| Wedgwood plate From the 'Village Green' Series Harvest Supper No.4767A   |
| Model: 1061  |
| This plate is in excellent condition, from the Wedgwood series entitled 'The Village Green' this plate is 'Harvest Supper' |
| Size approx :- 8" diameter   |
| £6.50  |

# Hope Cottage Crafts <sup>07/2009</sup>



Wedgwood plate From the 'Village Green' Series The Steam Fair No.6338A

Model: 1060

This plate is in excellent condition, from the Wedgwood series entitled 'The Village Green' this plate is 'The Steam Fair'

Size approx :- 8" diameter

£6.50

# Hope Cottage Crafts <sup>07/2009</sup>

## China - Glass -/- Glass



|  |
|--|
| Lovely Piece of Clear Art Glass  |
| Model: 845   |
| This attractive piece of heavy art glass is engraved on front with two daffodils, has a multicoloured streak through one side, glass has a tint of green to it. Size :- 8.5" Tall x " 3.25 at widest part of base narrowing to 2.5" at top |
| £9.99  |



|   |
|---|
| Mottled Blue, White & Red Art Glass Swan Dish   |
| Model: 1006   |
| This elegant glass swan dish is in very good condition, no chips or scratches. Stands approx. 7.5" tall&nbsp;x 9" long x 5.5" wide. Has a polished pontil and is finished with black through neck and around rim. Very heavy 1.5 kg |
| £16.00  |



|   |
|---|
| Pair of vintage ASED A Jack in the pulpit blue glass vases                                  |
| Model: 1034   |
| Pair of vintage ASED A blue & clear glass Jack in the pulpit vases, in excellent condition. |
| Size :- 6.5" tall and 9.5" tall   |
| £12.00  |

# Hope Cottage Crafts <sup>07/2009</sup>



Vintage Blue Bubble Glass Vase

Model: 1024

This vintage blue bubble glass vase is in good condition (very heavy)

Stands 5" tall x 3.5" at widest point.

£8.00



Vintage Blur & Green Bubble Vase (Soda Glass)

Model: 1035

This lovely vintage piece of glassware is in good condition, made from pale green bubbled glass with deep blue rim, has a rough pontil.

Stands approx 5" tall x 3" diameter

£8.50

# Hope Cottage Crafts <sup>07/2009</sup>

China - Glass -/- Pottery



Green pottery money bank advertising 'Quosh'

Model: 568

unfortunately the label has faded and bung from base is missing. Otherwise in excellent condition.

£6.00



Imari Style Decorative Plate

Model: 68

This elegant hand painted plate has an impressed mark on reverse. Size is approx 11"

£20.00

# Hope Cottage Crafts <sup>07/2009</sup>

China - Glass -/- Stoneware



Antique Stoneware Gin Bottle with Handle

Model: 1028

This vintage stoneware gin bottle with handle is in good condition.

Makers & manufacturers marks on side of bottle (as shown)

Side 12" high x 3.75" diameter.

£9.00



Stoneware Pottery Tankard F.L.S. Frederikshavn

Model: 133

This blue grey tankard was made in Denmark (see pictures for markings). It has a transfer design of F.L.S. Frederikshavn. Size 5" high 4.75" width at base and 3" at top

£8.00

# Hope Cottage Crafts <sup>07/2009</sup>

Clothing - Fashion -/- Footwear



|  |
|--|
| Pair of red Vintage Tap Dance Shoes Anello & Davide  |
| Model: 1032  |
| This pair of vintage tap dance shoes which are unused are in good condition (just a couple of very small marks, more like storage marks) |
| Shoes are size 6.5 uk size   |
| Made from pillar box red leather with red ribbon ties, they have taps to heel and toe.   |
| Makers name on sole (Anello & Davide of London)  |
| £0.00  |

# Hope Cottage Crafts <sup>07/2009</sup>

## Clothing - Fashion -/- Hats & Caps



Hand Crocheted Juliet Cap - Green Nylon

Model: 544

*Manufacturer: Hope Cottage Crafts*

This cap is made in the style of a 'Juliet Cap' hand crocheted a soft green nylon ribbon yarn thread, decorated with pale green glass beads. Very lacy & light weight, Ideal evening wear. Free size, will fit all.

£14.00



Hand Crocheted Juliet Cap - Multi Pastel Coloured Cotton

Model: 533

*Manufacturer: Hope Cottage Crafts*

This cap is made in the style of a 'Juliet Cap' hand crocheted in multi pastel coloured cotton plus metallic gold thread. Ideal evening wear. Free size, will fit all.

£14.00



Hand Crocheted Juliet Cap - Pale Lilac

Model: 399

*Manufacturer: Hope Cottage Crafts*

This smoking cap is made in the style of a 'Juliet Cap' hand crocheted in pale lilac nylon lurex chainette, decorated with pink and black glass beads. Very light weight, Ideal evening wear. Free size, will fit all.

£14.00

# Hope Cottage Crafts <sup>07/2009</sup>



Hand Crocheted Juliet Cap - Pastel Shades

Model: 623

Manufacturer: Hope Cottage Crafts

This cap is made in the style of a 'Juliet Cap' hand crocheted in pale pastel shades of nylon eyelash yarn with metallic silver thread, decorated with clear glass beads. Very light weight, Ideal evening wear. Free size, will fit all.

£14.00



Hand Crocheted Juliet Cap - Shredded Silk Strands

Model: 398

Manufacturer: Hope Cottage Crafts

This smoking cap is made in the style of a 'Juliet Cap' hand crocheted in a mixture of nylon and cotton yarn with shredded silk strands, decorated with three crocheted flowers, centers contain glass beads. Ideal evening wear. Free size, will fit all.

£14.00



Hand Crocheted Tamoshanter - Blue With Red Bobble

Model: 831

Manufacturer: Hope Cottage Crafts

This Tamoshanter is hand crocheted in dark blue wool/nylon with red bobble. Fits approx. 23" to 24" Head and is 12" across when flat. Unlined

£20.00



Hand Crocheted Tamoshanter - Dark Black

Model: 695

Manufacturer: Hope Cottage Crafts

This unisex hat is hand crocheted in dark black yarn with gold sparkle. Fits approx. 21.5" to 22.5" Head band is 3.5" deep, with pale gold tassel. Unlined

£20.00

# Hope Cottage Crafts <sup>07/2009</sup>



|   |
|---|
| Hand Crocheted Tamoshanter - Dark Green   |
| Model: 694  |
| <i>Manufacturer: Hope Cottage Crafts</i>  |
| This unisex hat is hand crocheted in dark green yarn with multicoloured sparkle. Fits approx. 22" to 23" Head band is 3.5" deep, with pom-pom on top. Unlined |
| £20.00  |



|   |
|---|
| Hand Crocheted Tamoshanter - Dark Green With Red Bobble   |
| Model: 833  |
| <i>Manufacturer: Hope Cottage Crafts</i>  |
| This Tamoshanter is hand crocheted in dark green nylon with red bobble. Fits approx. 23" to 24" Head and is 13" across when flat. Unlined |
| £20.00  |



|  |
|--|
| Handmade Smoking Cap - Lounging Hat & Jacket - Blue & Red Strip  |
| Model: 844   |
| <i>Manufacturer: Hope Cottage Crafts</i>   |
| This smoking jacket is Dark blue with pale blue and red stripes, 80% cotton 20% polyester material size 3XL (Quite large). The smoking cap has been handmade from original victorian design to match. Size is approx. Large ( 24.75" circumference by 3 1/4" deep ). gold tassel. Any questions please ask |
| £35.00   |



|  |
|--|
| Handmade Smoking Cap - Lounging Hat & Jacket - Red & Yellow Cot  |
| Model: 827   |
| <i>Manufacturer: Hope Cottage Crafts</i>   |
| This smoking jacket is Dark blue, red and yellow cotton velvet toweling material. Size = m fits approx 42" chest. back = 35" not including collarThe smoking cap has been handmade from original victorian design to match. Size is approx. ( 23" circumference by 4" deep ). Gold tassel and lined with grey cotton.Any questions please ask, |
| £38.00   |

# Hope Cottage Crafts <sup>07/2009</sup>



|  |
|--|
| Handmade Smoking Cap - Lounging Hat - Black Silk   |
| Model: 801   |
| <i>Manufacturer: Hope Cottage Crafts</i>   |
| This smoking cap has been handmade from original victorian design in black silk decorated with green, turquoise and red silk piping. Size is approx. ( 23.5" circumference by 3 1/2" deep ). Handmade tassel and braid. Lined with black silk. |
| £30.00   |



|  |
|--|
| Handmade Smoking Cap - Lounging Hat - Black Soft Jersey Knitt  |
| Model: 832   |
| <i>Manufacturer: Hope Cottage Crafts</i>   |
| This smoking cap has been handmade from original victorian design in black soft jersey knitt with silver flecks. Size is approx. ( 23" circumference by 4" deep ). Handmade tassel and cord, black band around rim and lined with red silk |
| £30.00   |



|  |
|--|
| Handmade Smoking Cap - Lounging Hat - Black Velvet   |
| Model: blkgoldh  |
| <i>Manufacturer: Hope Cottage Crafts</i>   |
| This smoking cap has been handmade from original victorian design in black velvet. Size is approx. ( 23" circumference by 3 1/2" deep ). Handmade tassel and braid. Lined with black silk. |
| £30.00   |



|  |
|--|
| Handmade Smoking Cap - Lounging Hat - Black Wool + Decoration  |
| Model: 596   |
| <i>Manufacturer: Hope Cottage Crafts</i>   |
| This smoking cap has been hand crocheted from original victorian design in black wool with hand stitched decoration in several different yarns. Size is approx. ( 23.25" circumference by 3" deep ). Handmade tassel & cord. Lined with red silk |
| £26.00   |

# Hope Cottage Crafts <sup>07/2009</sup>



|  |
|--|
| Handmade Smoking Cap - Lounging Hat - Black Wool + Metallic Gold   |
| Model: 439   |
| <i>Manufacturer: Hope Cottage Crafts</i>   |
| This smoking cap has been hand crocheted from original victorian design in black wool and metallic gold thread . Size is approx. ( 22.25" circumference by 3.25" deep ). With matching tassel. Lined with white cotton and gold printed stars. |
| £22.00   |



|   |
|---|
| Handmade Smoking Cap - Lounging Hat - Black Wool + Metallic Thre  |
| Model: 668  |
| <i>Manufacturer: Hope Cottage Crafts</i>  |
| This smoking cap has been handmade from original victorian design in black wool with metallic gold thread plus red thread with metallic red flecks. Size is approx. ( 22 7/8" circumference by 3.25" deep ). Matching tassel. Lined in red silk with floral design. |
| £22.00  |



|   |
|---|
| Handmade Smoking Cap - Lounging Hat - Blue, Turquoise & Grey Cot  |
| Model: 818  |
| <i>Manufacturer: Hope Cottage Crafts</i>  |
| This smoking cap has been hand crocheted from original victorian design in blue, turquois & grey cotton - nylon mix. Size is approx. ( 22" circumference by 3" deep ). Handmade tassel & cord. Lined with cream silk. |
| £30.00  |



|  |
|--|
| Handmade Smoking Cap - Lounging Hat - Brown & Gold Wool  |
| Model: 692   |
| <i>Manufacturer: Hope Cottage Crafts</i>   |
| This smoking cap has been hand crocheted from original victorian design from a mixture of brown and gold wool. Size is approx. ( 23" circumference by 3 1/2" deep ). Handmade tassel, unlined. |
| £18.00   |

# Hope Cottage Crafts <sup>07/2009</sup>



|  |
|--|
| Handmade Smoking Cap - Lounging Hat - Chocolate Brown Velvet   |
| Model: chochat   |
| <i>Manufacturer: Hope Cottage Crafts</i>   |
| This smoking cap has been handmade from original victorian design in chocolate brown velvet with embroidered top. Size is approx. ( 22.75" - 23" circumference by 3.5" deep ). Handmade tassel plum coloured. Lined with green silk. |
| £30.00   |



|   |
|---|
| Handmade Smoking Cap - Lounging Hat - Cream & Tweed Cotton  |
| Model: 469  |
| <i>Manufacturer: Hope Cottage Crafts</i>  |
| This smoking cap has been hand crocheted from original victorian design, in cream & tweed cotton mix with matching tassel. Size is approx. ( 22.5" circumference by 3.5" deep ). Lined with soft cotton woven material. |
| £22.00  |



|  |
|--|
| Handmade Smoking Cap - Lounging Hat - Cream Arran Yarn   |
| Model: 845   |
| <i>Manufacturer: Hope Cottage Crafts</i>   |
| The smoking cap has been handmade crocheted from original victorian design in cream arran yarn with dark pink and pale blue decoration. Size is approx. Large ( 22" circumference by 3.5" deep ). Hand made tassel of same yarn, lined with dark red patterned silk. |
| £30.00   |



|  |
|--|
| Handmade Smoking Cap - Lounging Hat - Dark Blue Rayon  |
| Model: 1   |
| <i>Manufacturer: Hope Cottage Crafts</i>   |
| This smoking cap has been hand crocheted from original victorian design in dark blue rayon chainette with metallic thread. Size is approx. ( 23" circumference by 3 1/4" deep ). Handmade tassel and cord from black chainette. Lined with brilliant blue silk with black square decoration. |
| £27.00   |

# Hope Cottage Crafts <sup>07/2009</sup>



|  |
|--|
| Handmade Smoking Cap - Lounging Hat - Dark Green   |
| Model: 656   |
| <i>Manufacturer: Hope Cottage Crafts</i>   |
| This smoking cap is made from original victorian design in dark green velvet with pale gold embroidered band. Size is approx. ( 22" circumference by 4" deep ). Dark green tassel. Lined with purple silk. Plus small square lion head button. Any questions please ask, we're always listing new exciting colours & sizes on ebay. Note:- Each hat is unique, (we only have in stock what is shown,) but if you have a preference for colour or size, contact us via ebay; we will do our best to please. |
| £30.00   |



|  |
|--|
| Handmade Smoking Cap - Lounging Hat - Dark Green Tartan  |
| Model: tarthatgreen  |
| <i>Manufacturer: Hope Cottage Crafts</i>   |
| This smoking cap has been handmade from original victorian design in dark green and blue tartan. Size is approx. ( 23" circumference by 3 1/2" deep ). Handmade tassel and braid, plum coloured silk. Lined with black silk. |
| £30.00   |



|   |
|---|
| Handmade Smoking Cap - Lounging Hat - Dark Olive Green Wool   |
| Model: 581  |
| <i>Manufacturer: Hope Cottage Crafts</i>  |
| This smoking cap has been hand crocheted from original victorian design in dark olive green wool and beige cotton. Size is approx. ( 23.25" circumference by 3.5" deep ). Handmade tassel. Lined with dark green satin. |
| £22.00  |



|  |
|--|
| Handmade Smoking Cap - Lounging Hat - Floral & Paisley Quilted   |
| Model: 779   |
| <i>Manufacturer: Hope Cottage Crafts</i>   |
| This smoking cap has been handmade from original victorian design in a floral/paisley quilted nylon. Size is approx. ( 22" circumference by 3 1/4" deep ). Handmade tassel and cord. Line with dark pink taffeta silk. |
| £28.00   |

# Hope Cottage Crafts <sup>07/2009</sup>



|   |
|---|
| Handmade Smoking Cap - Lounging Hat - Green & Blue Tartan   |
| Model: 649  |
| <i>Manufacturer: Hope Cottage Crafts</i>  |
| This smoking cap has been handmade from original victorian design in lightweight red, green & blue tartan style silk. Size is approx. ( 23.75" circumference by 3 1/4" deep ).Green silk tassel and band. Lined with red patterned silk |
| £28.00  |



|   |
|---|
| Handmade Smoking Cap - Lounging Hat - Green & Multicoloured Twee  |
| Model: 471  |
| <i>Manufacturer: Hope Cottage Crafts</i>  |
| This smoking cap has been hand crocheted from original victorian design, in green and multicoloured tweed yarn with matching tassel. Size is approx. ( 23" circumference by 3.5" deep ). Lined with soft woven cotton material. |
| £22.00  |



|  |
|--|
| Handmade Smoking Cap - Lounging Hat - Green Woven Fabric   |
| Model: 109   |
| <i>Manufacturer: Hope Cottage Crafts</i>   |
| The smoking cap has been handmade from original victorian design in a green woven fabric wool/nylon with striped geometrical design. Size is approx. Large ( 23.5" circumference by 3.5" deep ). Hand made black tassel. Lind with green silk. |
| £30.00   |



|   |
|---|
| Handmade Smoking Cap - Lounging Hat - Medieval Design   |
| Model: 846  |
| <i>Manufacturer: Hope Cottage Crafts</i>  |
| This hat is extra large, (fit for a king or someone with a large cranium) :-)   |
| The smoking cap has been handmade from original victorian design in a medieval design cotton. Size is approx. Large ( 26" circumference by 3.5" deep ). Bronze coloured tassel & braid. Lined with white silk |
| £30.00  |

# Hope Cottage Crafts <sup>07/2009</sup>



Handmade Smoking Cap - Lounging Hat - Medieval Design Cotton

Model: 657

*Manufacturer: Hope Cottage Crafts*

This smoking cap has been handmade from original victorian design in medieval design cotton. Size is approx. ( 23.25" circumference by 3 1/2" deep ). Dark green tassel. Lined with gold silk.

£30.00



Handmade Smoking Cap - Lounging Hat - Multi-toned blue wool/nylon

Model: 44

*Manufacturer: Hope Cottage Crafts*

This smoking cap has been hand crocheted from a multi toned blue wool/nylon mix. size is ( Approx. circumference 24.5" by 3" deep ) Lined with cotton handmade tassel.

£22.00



Handmade Smoking Cap - Lounging Hat - Multicolour Ribbed Soft V

Model: 648

*Manufacturer: Hope Cottage Crafts*

This smoking cap has been handmade from original victorian design in multicolour ribbed soft velvet. Size is approx. ( 22.25" circumference by 3 3/4" deep ). Handmade blue tassel. Plus silver metal button. Lined with multicoloured silk.

£30.00



Handmade Smoking Cap - Lounging Hat - Multicolour Stripped Desi

Model: 654

*Manufacturer: Hope Cottage Crafts*

This smoking cap has been handmade from original victorian design in soft woolen mixture material with irregular . Size is approx. ( 23.75" circumference by 3 3/4" deep ). Handmade cream & gold tassel. Lined with purple silk.

£30.00

# Hope Cottage Crafts <sup>07/2009</sup>



|  |
|--|
| Handmade Smoking Cap - Lounging Hat - Multicoloured Chenille   |
| Model: 808   |
| <i>Manufacturer: Hope Cottage Crafts</i>   |
| This smoking cap has been hand crocheted from original victorian design in multicoloured chenille. Size is approx. ( 22.5" circumference by 3 1/2" deep ). Handmade tassel and cord. Lined with soft brown material. |
| £30.00   |



|  |
|--|
| Handmade Smoking Cap - Lounging Hat - Multicoloured Floral Print   |
| Model: 812   |
| <i>Manufacturer: Hope Cottage Crafts</i>   |
| This smoking cap has been handmade from original victorian design in a soft multicoloured floral print silk. Size is approx. ( 22.75" circumference by 3 1/2" deep ). Handmade tassel., cord and braid. Lined with cream silk. |
| £30.00   |



|  |
|--|
| Handmade Smoking Cap - Lounging Hat - Multicoloured Wool (Brown)   |
| Model: 629   |
| <i>Manufacturer: Hope Cottage Crafts</i>   |
| This smoking cap has been hand crocheted from original victorian design in multicoloured wool (browns & creams). Size is approx. ( 23.5" circumference by 3 1/4" deep ). Handmade cream cotton tassel, lined with black satin. |
| £26.00   |



|  |
|--|
| Handmade Smoking Cap - Lounging Hat - Old Gold & Cream Silk Cha  |
| Model: 809   |
| <i>Manufacturer: Hope Cottage Crafts</i>   |
| This smoking cap has been hand crocheted from original victorian design in old gold & cream silk chainette. Size is approx. ( 23" circumference by 3 1/4" deep ). Handmade tassel & cord to match. Lined with cream coloured cotton. |
| £28.00   |

# Hope Cottage Crafts <sup>07/2009</sup>



|   |
|---|
| Handmade Smoking Cap - Lounging Hat - Old Gold Mercerised Cotton  |
| Model: 767  |
| Manufacturer: Hope Cottage Crafts   |
| This smoking cap has been hand crocheted from original victorian design in old gold mercerised cotton with copper metallic thread. Size is approx. ( 23.75" circumference by 3 1/4" deep ). Handmade tassel & cord. Lined with soft brown and beige lining. |
| £28.00  |



|   |
|---|
| Handmade Smoking Cap - Lounging Hat - Olive Green Faux Suede  |
| Model: 652  |
| Manufacturer: Hope Cottage Crafts   |
| This smoking cap has ben handmade from original victorian design in olive green faux suede. Size is approx. ( 23.75" - 24" circumference by 3 1/2" deep ). Handmade dark plum tassel & braid. Lined with purple silk. Any questions please ask, we're always listing new exciting colours & sizes on ebay. Note:- Each hat is unique, (we only have in stock what is shown,) but if you have a preference for colour or size, contact us via ebay; we will do our best to please. |
| £30.00  |



|  |
|--|
| Handmade Smoking Cap - Lounging Hat - Red & Black Velvet   |
| Model: 650   |
| Manufacturer: Hope Cottage Crafts  |
| This smoking cap has been handmade from original victorian design in red velvet with black design. Size is approx. ( 23.75" circumference by 3 3/4" deep ). Handmade black tassel. Lined with dark red patterned silk. |
| £30.00   |



|   |
|---|
| Handmade Smoking Cap - Lounging Hat - Red Faux Suede  |
| Model: 847  |
| Manufacturer: Hope Cottage Crafts   |
| The smoking cap has been handmade from original victorian design in red faux suede feel material. Size is approx. Large ( 23.25" circumference by 3.5" deep ). Black hand made silk tassel & braid. Lined with black silk |
| £30.00  |

# Hope Cottage Crafts <sup>07/2009</sup>



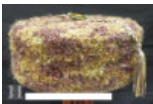
|  |
|--|
| Handmade Smoking Cap - Lounging Hat - Red Silk   |
| Model: 655   |
| <i>Manufacturer: Hope Cottage Crafts</i>   |
| This smoking cap has ben handmade from original victorian design in Red silk with diamond pattern. Size is approx.(23.25" circumference by 3 1/2" deep).Handmade black tassel. Lined with gold silk. |
| £30.00   |



|   |
|---|
| Handmade Smoking Cap - Lounging Hat - Red Tartan  |
| Model: tarthat  |
| <i>Manufacturer: Hope Cottage Crafts</i>  |
| This smoking cap has been handmade from original victorian design in wool/nylon Red Tartan with yellow, blue, white & green pattern. Size is approx. ( 23.25" circumference by 3 1/2" deep ). Handmade tassel. Lined with black silk. |
| £30.00  |



|  |
|--|
| Handmade Smoking Cap - Lounging Hat - Red, Blue & Green Paisley  |
| Model: 653   |
| <i>Manufacturer: Hope Cottage Crafts</i>   |
| This smoking cap has ben handmade from original victorian design in red, blue & green paisley design, soft Jersey material. Size is approx. ( 24.25" circumference by 4" deep ). Handmade blue tassel & braid. lined with purple silk. |
| £30.00   |



|   |
|---|
| Handmade Smoking Cap - Lounging Hat - Ribon Based Boucle Yarn   |
| Model: 580  |
| <i>Manufacturer: Hope Cottage Crafts</i>  |
| This smoking cap has been hand crocheted from original victorian design in a ribbon based boucle yarn, with button to match. Size is approx. ( 23" circumference by 3" deep ). Handmade tassel. Unlined |
| £22.00  |

# Hope Cottage Crafts <sup>07/2009</sup>



Handmade Smoking Cap - Lounging Hat - Shades of Green Silk Ribb

Model: 624

*Manufacturer: Hope Cottage Crafts*

This smoking cap has been hand crocheted from original victorian design in shades of green silk ribbon. Size is approx. ( 23" circumference by 3 1/4" deep ). Handmade tassel & cord, lined with pale green cotton.

£26.00



Handmade Smoking Cap - Lounging Hat - Soft Jersey Material with

Model: 810

*Manufacturer: Hope Cottage Crafts*

This smoking cap has been handmade from original victorian design in soft jersey material with a gold, green & black design. Size is approx. ( 24" circumference by 4" deep ). Handmade tassel, cord and braid with beads. Lined with black and gold spotted cotton.

£30.00



Handmade Smoking Cap - Lounging Hat - Striped Brown & Cream

Model: 651

*Manufacturer: Hope Cottage Crafts*

This smoking cap has ben handmade from original victorian design in stiped brown to cream velvet. Size is approx. ( 23.5" circumference by 3 1/2" deep ). Handmade plum coloured tassel. Lined with purple silk.

£30.00



Handmade Smoking Cap - Lounging Hat - Tann Coloured Velvet

Model: 773

*Manufacturer: Hope Cottage Crafts*

This smoking cap has been handmade from original victorian design in tann coloured velvet lined with beige silk patterned material. Size is approx. ( 23.5" circumference by 3 1/2" deep ). Handmade bronze coloured tassel & cord.

£28.00

# Hope Cottage Crafts <sup>07/2009</sup>



|   |
|---|
| Handmade Smoking Cap - Lounging Hat - Turquoise & Heather Wool  |
| Model: 578  |
| <i>Manufacturer: Hope Cottage Crafts</i>  |
| This smoking cap has been hand crocheted from original victorian design in turquoise & heather wool plus beige cotton. Size is approx. ( 22.5" circumference by 3.25" deep ). Handmade tassel. Lined with pale blue silk. |
| £22.00  |



|   |
|---|
| Handmade Smoking Cap - Lounging Hat - Wine Coloured Quilted Nyl   |
| Model: 819  |
| <i>Manufacturer: Hope Cottage Crafts</i>  |
| This smoking cap has been handmade from original victorian design wine coloured quilted nylon, with a green, yellow and pink paisley design. Size is approx. ( 22" circumference by 3" deep ). Handmade tassel, cord and braid to match. Lined with pink taffeta. |
| £30.00  |



|  |
|--|
| Handmade Smoking Cap - Lounging Hat w/ snake resting on top  |
| Model: 660   |
| <i>Manufacturer: Hope Cottage Crafts</i>   |
| This is an authentic desing smoking cap with a difference. This cap has a hand crocheted snake, coiled and casually resting to one side. This smoking cap has been hand crocheted from original victorian design in mercerised cotton. Size is ( 23" circumference by 3" deep ). Snake crocheted in multicoloured wool and decorated with glass beads. |
| £26.00   |



|  |
|--|
| Handmade Smoking Cap - Lounging Hat Faux Leopard Skin  |
| Model: 485   |
| <i>Manufacturer: Hope Cottage Crafts</i>   |
| This smoking cap has been handmade from original victorian design, in Faux Leopard skin material. Size is approx. ( 23.25" circumference by 4" deep ). Hand crocheted braid and tassel in flat black chainette, with metal button. Lined with cream satin. |
| £26.00   |

# Hope Cottage Crafts <sup>07/2009</sup>



Handcrocheted Victorian Style Sports Cap

Model: 661

*Manufacturer: Hope Cottage Crafts*

This cap is in the style of a victorian sports cap, suitable for female or male. Six hand crocheted fluted segments, crocheted together. This smoking cap has been handmade from original victorian design in grey/beige slub yarn, nylon-cotton with small metallic silver coloured heart to one side. Size is approx. ( 22.5" circumference may stretch - 23" ).

£22.00

# Hope Cottage Crafts <sup>07/2009</sup>

Clothing - Fashion -/- Other



|  |
|--|
| Colorful Mijoli Silk Jacket  |
| Model: 826   |
| This lovely Blouson jacket made from multicoloured silk with a military theme is labeled MIJOLI has a zip fastener. A most unusual flamboyant jacket. Believed to be from the 70's, is in good clean condition other than one small snag near waist band (hardly shows) Size:- underarm to underarm = 25" Arm to end of cuff = 24" - Back from below collar band to bottom of hip band 24.5" (looks like it should be in the Beatles Sgt. Pepper's Lonely Hearts Club Band ) |
| £25.00   |

# Hope Cottage Crafts <sup>07/2009</sup>

## Clothing - Fashion -/- Scarves / Shawls



|  |
|--|
| Black & Gold Twist Scarf   |
| Model: 1014  |
| <i>Manufacturer: Hope Cottage Crafts</i>   |
| This cute little twist scarf is hand crocheted from a black & gold nylon mixture yarn. Size approx. 50" long x 6" wide |
| £11.50   |



|   |
|---|
| Hand Crocheted Blue / Grey Stole Scarf  |
| Model: 1012   |
| <i>Manufacturer: Hope Cottage Crafts</i>  |
| This lovely stole / scarf is incredibly long, soft, warm and extremely cuddly. Size approx.. 100" long x 16" wide |
| £18.00  |



|   |
|---|
| Hand Crocheted Green / Gold Boa Scarf   |
| Model: 1016   |
| <i>Manufacturer: Hope Cottage Crafts</i>  |
| This hand crocheted Green / Gold boa is made from an old Victorian design. Size approx.. 60" long |
| £9.50   |

# Hope Cottage Crafts <sup>07/2009</sup>



|  |
|--|
| Hand Crocheted Shawl 3ply Beige Shetland wool  |
| Model: 1015  |
| <i>Manufacturer: Hope Cottage Crafts</i>   |
| This lovely shawl is very light weight and delicate, made from 3ply Shetland wool in a soft beige with a beautiful wide edging of crocheted shells. Size approx. 96" across (not including tassels) x 34" Deep (including tassels) |
| £35.00   |



|   |
|---|
| Hand Crocheted Shawl Black Crushed Chenille   |
| Model: 1010   |
| <i>Manufacturer: Hope Cottage Crafts</i>  |
| This jet black shawl is hand crocheted from some lovely crushed black velvet chenille, with some cute crinkly tassels. Very light weight. Size approx. 72" across (not including tassels) x 36 deep (including Tassels) |
| £28.00  |



|  |
|--|
| Hand Crocheted Shawl Multicoloured / mixed yarn  |
| Model: 1009  |
| <i>Manufacturer: Hope Cottage Crafts</i>   |
| This lovely large shawl is hand crocheted in various yarns & multitude of colours, including some metallic sparkle. Long tassels to match. Shawl is very light weight. Size approx. 68" across (not including tassels) x 48 Deep (including tassels) |
| £35.00   |



|   |
|---|
| Hand Crocheted Traditional Aran Yarn Shawl  |
| Model: 1011   |
| <i>Manufacturer: Hope Cottage Crafts</i>  |
| This hand crocheted traditional Aran yarn shawl is made from Wendy Aran (Flecked wool & nylon) including double knotted tassels is very warm and cosy to wear. Size approx. 76" wide (not including tassels) x 38" deep (including tassels) |
| £30.00  |

# Hope Cottage Crafts <sup>07/2009</sup>



|   |
|---|
| Pale Blue / Grey Twist Scarf  |
| Model: 1013   |
| <i>Manufacturer: Hope Cottage Crafts</i>  |
| This cute little twist scarf is hand crocheted in a very pale blue / grey yarn with some silver flecks. Size approx. 50" long x 4" wide |
| £11.50  |

# Hope Cottage Crafts <sup>07/2009</sup>

## Collectables -/- Bitz & Bobz

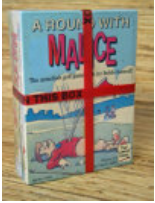


|  |
|--|
| 12 Vintage Novelty Postcards   |
| Model: 270720  |
| 12 Novelty postcards all unused and in good condition. Free shipping to UK - (first class postage) |
| Size - 5.5" x 3.5"   |
| £6.00  |



|  |
|--|
| 2 Small Carved Buddha Toggles (carved from a nut)  |
| Model: 270717  |
| These two cute little toggles are believed to be carved from a nut.                                      |
| (unknown what type of nut) Carved all round they stand 1" tall and have a hole right through the middle. |
| £3.50  |

# Hope Cottage Crafts <sup>07/2009</sup>



A Round With 'Malice' Armchair Golf Game

Model: 712

A Round With 'Malice' Armchair Golf Game.

A Round With MALICE The armchair golf game with no holds barred! All complete. and still sealed with 'do not open. this box' Printed on packing strap.

On the back of the box it reads: A Round With MALICE. It's Matchplay with a difference, a chance for non-golfers to get their revenge on their golf-mad partners!

There's a choice of general knowledge and golfing trivia questions to suit all players and you can play individually or in teams.

Answer a question correctly and play your stroke, but you'll need skill and strategy to reach the hole first, as you avoid the Water and the Rough...and your opponents!

Contents -

1 x Pack of 84 Cards

1 x Plastic Golfing Green

1 x Yardstick

1 x Bag of Tiddlywink Balls.

£5.00

# Hope Cottage Crafts <sup>07/2009</sup>



## Collection of Small vintage buttons

Model: 1052

Including 2 glass fish shaped buttons decorated with black & gilt with glass loops for fitting at rear, 6 crystal cut buttons with brass fittings and 15 cut jet buttons with brass fittings. Sizes :-

Jet - 3/8"

crystal - 3/8" - 1/2"

Fish - 1" long

Free

shipping to UK - (first class postage)

£12.50



## Ladies & Gents Quick Brew Promotional Watches

Model: 717

Ladies & Gents Quick Brew Promotional Watches These two Quick Brew promotional watches have never been used, are in excellent condition, other than the boxes slightly battered and bruised.

£6.00

# Hope Cottage Crafts <sup>07/2009</sup>

## Collectables -/- Bric-a-Brac



Green Alabasta Powder Bowl

Model: 1051

This lovely piece of green Alabasta powder bowl has a gold metal rim to lid and base, hinged at rear. (photo taken to try and show that the item is opaque)

Size :- approx. 2.25" x 3" diameter

Sticker on base Made in Italy

£5.00

# Hope Cottage Crafts <sup>07/2009</sup>

## Collectables -/- Cameras



Kodak Bantam Coloursnap, Vintage Camera

Model: 436

Kodak Bantam Coloursnap, Vintage Camera Clean inside and out, appears to be in good working order, although back plate with meter calculations is a bit worn. With original plastic case. (some damage) Note:- I am not a camera expert sol all these items are sold as is, if I can help you with any questions you have, I will gladly do so.

£8.00



No 2 Cartridge Hawk-Eye model B Vintage Camera

Model: 434

No 2 Cartridge Hawk-Eye model B Vintage Camera This camera seems to be in not so good condition, does not seem to want to open, plus glass appears to be missing from front. Comes with canvas case. Note:- I am not a camera expert sol all these items are sold as is, if I can help you with any questions you have, I will gladly do so.

£10.00



Ricoh KR-10 Camera & Sigma 39-80 Lens

Model: 1031

[Click HERE for this item on ebay](#)

£25.00

# Hope Cottage Crafts <sup>07/2009</sup>



Yashica FX-103 Camera + Original Box & Manual

Model: mdjgfkgh

Click [HERE](#) for this item on ebay

£15.00

# Hope Cottage Crafts <sup>07/2009</sup>

Collectables -/- Other



Hand Carved Wooden Tray - Asian - Sheesham Wood

Model: tray23453456

Lovely hand carved Sheesham wood serving tray, probably from India is carved from a beautiful peice of sheesham wood with 8 circular and one oval floral designs.

Size - 23.5" x 13.5"

£12.00

## Collectables -/- Textiles



4 Antique Needlepoint Renaissance Lace Table Mats

Model: 641

This lovely set of 4 Antique Needlepoint Renaissance Ribbon/Tape Lace Table Mats are in good condition (one with very pale stain, believed to be tea) They are beautifully hand stitched. Size :- approx. 18" x 12"

£25.00

# Hope Cottage Crafts <sup>07/2009</sup>

## Collectables -/- Treen



|   |
|---|
| Asian - Oriental Hand Carved Hardwood Dragon  |
| Model: 190  |
| This Asian - Oriental dragon on plinth is beautifully hand carved in dark hardwood. Is in excelent condition (no chips or breaks)<br>Approx. 4" tall by 3" wide |
| £7.50   |



|  |
|--|
| Miniature Incense Box, Containing 5 Incense Cones  |
| Model: 711   |
| This cute little incense container has brass ends, is decorated with pierced work on lift up lid, and has 5 small incense cones inside Measurements approx. 2.5" x 1.5" x 1" |
| £3.00  |



|  |
|--|
| Small Wooden Trinket Box Decorated With Brass  |
| Model: 219   |
| This small wooden trinket box is decorated with brass, has a hinged lid with drop latch and hole for a small padlock, (not included)Size :- Width 5" Depth 3.5" &nbsp;Height 2.25" |
| £5.50  |

# Hope Cottage Crafts <sup>07/2009</sup>

## Furniture -/- Contemporary



|   |
|---|
| Asian Carved Folding Extending Book Rack  |
| Model: 1017   |
| Asian Carved Folding / Extending Book Rack This book rack is believed to be carved from Sheesham Wood Size "6 x "13 extending to "21 wide |
| £8.00   |



|  |
|--|
| Handmade 3 Legged Stool in Reclaimed Ash & Pitch Pine  |
| Model: 562   |
| <i>Manufacturer: Hope Cottage Crafts</i>   |
| This quaint attractive stool with 3 rounded legs is made from reclaimed Ash and pitch pine, made in the style of a rustic milking stool. Colour dark brownSize approx. Top - 9 inches x 1.25 inches thick Height - 13 inches |
| £45.00   |



|   |
|---|
| Handmade Copy of Early Colonial Courting Mirror   |
| Model: 543  |
| <i>Manufacturer: Hope Cottage Crafts</i>  |
| This little looking glass is supposed to be an early rendition of an old Chinese idea. Mirrors were encredably rare and valuable during the first settlement period that broken fragments were saved and carefully framed. one small natural opening in the grain (as shown), left to enhance the antiquated look. Size - 12 x 22 inches Mirror - 6 x 10.5 inches |
| <del>£48.00</del> £30.00  |

# Hope Cottage Crafts <sup>07/2009</sup>



|  |
|--|
| Handmade Reproduction Pine Settle Inc. reclaimed wood  |
| Model: 395   |
| <i>Manufacturer: Hope Cottage Crafts</i>   |
| This reproduction of an old settle was handmade in 'Hope Cottage Crafts' workshops. Has been made from pine (some reclaimed wood) ie back boards are original victorian tongue & groove boards, reclaimed from a Suffolk cottage. Has been distressed to look old. Approx. 53" inches wide - - - 51" inches High - - - Seat 18" inches high - - - by 17" inches deep |
| £350.00  |



|  |
|--|
| Handmade Reproduction Tripod Wine Table. Very Small  |
| Model: 688   |
| <i>Manufacturer: Hope Cottage Crafts</i>   |
| This cute little table is a reproduction of a traditional victorian tripod Wine Table. Had made from reclaimed mahogany it stands approx. 13" tall, width of top is approx. 9.5" |
| £60.00   |



|  |
|--|
| Handmade Solid & Burr Walnut Veneer Occasional Table   |
| Model: 637   |
| <i>Manufacturer: Hope Cottage Crafts</i>   |
| This delightful occasional table has been hand crafted at our 'Hope Cottage Crafts' workshop, from solid Walnut; whilst the top has been hand veneered in Burr Walnut. The legs are chamfered on the inside and hand carved to the front, also carved across the stretcher. Table has been hand finished to give 'aged' look, then wax polished. (Please note: the legs look distorted due to the photograph, they are actually straight) Size. Approx. Height = 13" by 19.75" square Approx. Height = 33cm by 50cm square |
| £350.00  |

# Hope Cottage Crafts <sup>07/2009</sup>



|   |
|---|
| Handmade Tripod Table Candle - Jardinier Stand  |
| Model: 671  |
| <i>Manufacturer: Hope Cottage Crafts</i>  |
| This quaint little stand has been made with reclaimed mahogany and stands approx. 23 1/2" the top is approx. 11 1/2" across with a slim lip around the edge. Hand finished with wax polish. Design inspired by 'Shaker Furniture' |
| £75.00  |



|   |
|---|
| Handmade Tripod Table Jardinier Stand   |
| Model: 670  |
| <i>Manufacturer: Hope Cottage Crafts</i>  |
| This lovely piece is made from reclaimed mahogany (one small repair on top as shown) with an insert of rosewood and banded with oak, making this quite unique. Hand finished with wax polish. Stands approx. 26 3/4" high and the top is approx 13" across. Design inspired by 'Shaker Furniture' |
| £75.00  |



|  |
|--|
| Reproduction Handmade Pine Stool, Rough Cut  |
| Model: 486   |
| <i>Manufacturer: Hope Cottage Crafts</i>   |
| This lovely little reproduction stool stands approx. 14 inches high whilst the seat is approx. 19 x 9 inches. Has been handmade from rough cut pine, finished with home made bees wax. Very versatile little stool |
| £45.00   |



|   |
|---|
| Small Handmade 3 Legged Stool in Mahogany   |
| Model: 463  |
| <i>Manufacturer: Hope Cottage Crafts</i>  |
| This cute little stool is approx. 8.25" tall with a seat circumference of 8" is hand turned from two types of mahogany. |
| £35.00  |

# Hope Cottage Crafts <sup>07/2009</sup>

## Furniture -/- Restored



|   |
|---|
| Antique Writing Slope Desk On Stand   |
| Model: writeslope   |
| <i>Manufacturer: Hope Cottage Crafts</i>  |
| This antique writing slope is in good condition after being carefully restored, it appears the stand was added later. Writing slope is believed to be Walnut, where as the newer base has been made from pine. Size:- approx. 39" wide 21" deep * 42.5" high at rear and 42" at front. Replacement leather & base have been aged and distressed to match in very well. ( the photographs don't do it justice) |
| £280.00   |

# Hope Cottage Crafts <sup>07/2009</sup>

## Metalware -/- Brass



|   |
|---|
| 10 Horse Brasses inc. John Peel   |
| Model: 723  |
| These 10 various, heavy horse brasses including 1 Horseshoe shaped, with meersburg badge plus shamrock leaf. Also very good condition John Peel horse brase with registration number 876559 on reverse. |
| <del>£25.00</del> £15.00  |



|  |
|--|
| 3 Brass Flying Swallows (Wall ornaments)   |
| Model: 1029  |
| This set of three swallows is in good condition, they have hanging loops on the back and are cast brass. |
| Sizes 5" - 3.5" - 2.5"   |
| £8.50  |



|  |
|--|
| Brass Apple & Pear Trinket Boxes   |
| Model: 56  |
| Brass Apple & Pear Trinket Boxes approx. "3 wide x "4 tall (apple) "5 tall (pear) In perfect condition No Markings |
| £12.00   |



|   |
|---|
| Brass Bell With Squirrel Handle   |
| Model: 702  |
| Brass Bell With Squirrel Handle This bell is approx. "5 tall x 2.5" wide and is in perfect condition. |
| £6.00   |

# Hope Cottage Crafts <sup>07/2009</sup>



## Brass Can Shaped Incense Burner

Model: 1019

This can shaped incense burner with lid is presumed to be Indian, it stands 3.5" tall x 3.5" wide.

In good condition it punched out with star shapes.

£4.50



## Brass Cigarette Box Made In China

Model: 720

Brass Cigarette Box Made In China This attractive brass box is decorated with a chinese design, lined with wood. Stamped on underneath (MDAE IN CHINA) Size 3.5" x 4.5" x 1.5"

£7.99



## Brass Door Knocker in shape of Horseshoe and Horse

Model: 1050

This pleasing piece of brass in the shape of a horseshoe with a trotting horse as the knocker is in excellent condition, (would suit any house with room for a pony)

Size :- width 4" x 5" high

£8.50



## Brass Frog - Toad Marked ELPEC made in London

Model: 705

Brass Frog - Toad Marked ELPEC made in London This delightful figure is 4" from nose to toes and 2" wide Would compliment any collection.

£6.50

# Hope Cottage Crafts <sup>07/2009</sup>



## Brass Horse Shoe, Good Luck From Walt Disney World

This quaint little collectors peice is in good condition  
is approx. 3" wide by 5.5" tall

£3.00



## Brass Ornament Child On Grandpa's Knee

Model: 823

This cast brass ornament is of a child on Grandpa's knee, reading a book, with dog looking on.Hollow cast brass. Quite unusual.Size Approx. 3" x 3" and 5" tall

£12.00



## Brass Orniment of Spanish Donkey With Pannier - Baskets

Model: 1030

This cute little donkey is only 2.5" tall by 3 long, baskets are seperate.

£3.50



## Brass Pony & Trap Ornament

Model: 1008

This superb piece of brass ware is in very good clean condition. Item does come apart ie seat removes, wheels  
undo,&nbsp;pony separates from cart even the lamp is removable.This is a very elegant ornament, also very heavy at 2.8  
kgSize :- Approx. 15" long x 5.5" wide and the pony's head stands 8.5"

£35.00

# Hope Cottage Crafts <sup>07/2009</sup>



|  |
|--|
| Brass Puss In Boot Ornament  |
| Model: 1018  |
| This lovely hollow cast brass ornament of a puss in a boot stands approx 4" high and is 2" wide by 4.5" long |
| Very cute item   |
| <del>£11.00</del> £8.00  |



|  |
|--|
| Brass Torque Necklace with clip on Earrings  |
| Model: 1044  |
| This lovely brass necklace with earrings, possibly inlaid with Dichroic glass (in what seems to be an Ethnic style) is in excellent condition. |
| Internal radius of necklace 16.75" or 42.5cm   |
| Very unusual and attractive piece.   |
| £18.00   |



|   |
|---|
| Copper And Brass Log Basket   |
| Model: 1005   |
| This lovely vintage copper and brass log basket is in reasonable condition, as seen in picture slightly mis-shapen where basket has been bent over leg through use and has a few pit marks as would be expected. An attractive piece of copper-ware for the fireside. Size :- 17" x 11" |
| £25.00  |



|  |
|--|
| Cute Little Brass Owl                                  |
| Model: 714   |
| This little cutie stands approx. 3" tall and 2.5" wide |
| £4.00  |

# Hope Cottage Crafts <sup>07/2009</sup>



|   |
|---|
| Elegant Brass Crane Ornament  |
| Model: 1004   |
| This lovely unusual brass crane ornament stands aprox. 12" tall Very good condition |
| £9.50   |



|   |
|---|
| Elegant Brass Lion Figure   |
| Model: 143  |
| This elegant Lion stands proud at 3.5" tall x 7.5" from nose to tip of tail |
| £5.00   |



|  |
|--|
| Elegant Brass Swan   |
| Model: 142   |
| This elegant brass swan is well made and quite heavySizeApprox. 6" tallApprox. 5" long |
| £5.00  |



|   |
|---|
| Hollow Cast Brass Horse Ornament  |
| Model: 1045   |
| This lovely little trotting horse made from hollow cast brass is 4.5" long x 4.5" tall. |
| A nice little figure in good clean condition, is quite heavy for it's size.             |
| £5.50   |

# Hope Cottage Crafts <sup>07/2009</sup>



Pair of Brass Horse Figures

Model: 713

This pair of brass horse figures stand approx. 2.5" tall and 3" long

£6.00



Set of Six Miniature Brass Goblets in Display Box

Model: 140

This elegant set of six brass goblets are in perfect condition, although the display case has been opened for a considerable time causing the lining to fade badly. Leather cover box is in good condition, as are the two brass clips fastening it. Each goblet is marked on base ( E.P.N.S ) Goblets appear to be hand crafted.

£15.00



The Victory Ship Brass Cork Screw

Model: 566

This lovely piece is in really good condition and is approx. 6" long

£7.50

# Hope Cottage Crafts <sup>07/2009</sup>

## Metalware -/- EPNS



|   |
|---|
| EPNS Milk Jug & Sugar Bowl  |
| Model: 1043   |
| These two items are in reasonable condition (the jug has a few black marks) |
| A classical pair.   |
| Size :- approx. bowl 2.5" x 2.5" diameter - jug 3" x 2.5" diameter          |
| £4.50   |



|  |
|--|
| EPNS Sweet Tray  |
| Model: 701   |
| EPNS Sweet Tray This sweet tray has no markings, a cut foliage design with rope edging. Other than some pitting marks this tray is in good condition. Size 9" x 7" |
| £4.99  |

# Hope Cottage Crafts <sup>07/2009</sup>

## Metalware -/- Pewter



|   |
|---|
| Solid Pewter Tankard  |
| Model: 708  |
| This pewter tankard is in fairly good condition, apart from a small dent were the lower part of the handle joins the body. Size 4" tall 3.5" at base 2.75" at rim |
| £6.00   |

# Hope Cottage Crafts <sup>07/2009</sup>

Metalware -/- Plated-ware



|   |
|---|
| Small Silver Plated Vintage Trophy On Wooden Stand  |
| Model: 1020   |
| This lovely little vintage trophy cup on wooden stand is in reasonably good condition (photo shows one small dent) Has never been engraved. |
| Cup 3.5" high x 1.75" diameter  |
| Stand 2.25" at base   |
| £8.00   |

## Metalware -/- Silver



|   |
|---|
| Antique Silver Fish - unmarked  |
| Model: 1049   |
| This little treasure presumably made from silver but has no markings, is damaged at the tail but otherwise good, decorated on each side with a angel face with wings (putti). |
| Made from thin pressed silver filled with some type solid filling.  |
| Size :- 4.5" long   |
| £9.00   |



|   |
|---|
| Silver Pendant  |
| Model: 270716   |
| This lovely silver pendant with the word silver running down it is in excelent condition, |
| Makers name - A & A J   |
| Halmarked England London 1977.  |
| Size - 1.75" including loop x 3/8" wide   |
| £12.00  |

## Other



### 3 Very Large Vintage Pyrex Jars - Containers - Carbouy

Model: 647

These 3 very large early Pyrex containers are in good condition (apart from some light chipping around top rim as shown) All stamped as 'Made In England' by Pyrex Two are stamped as 'VACUUM TESTED TO TWICE WORKING PRESSURE' the third not stamped. Approx Size. 28cm wide x 38cm tall - Outside diameter of neck 19cm. These jars are made approx. 6mm thick and weigh 4.5kg. So are 0. Note:- Also pictured are some of the natural bubbles in the glass.

£35.00



### Quantity of Tapestry Wool +Embroidery Frame

Model: tapestry647

This collection contains 22 Twilleys unwrapped skeins and a good quantity of large loose skeins, colours too numerous to mention. Also included an embroidery frame with an unfinished tapestry, (unknown if colours to finish tapestry are included). Frame holds up to an 18" canvas. All yarn is in good clean condition!

£25.00

# Hope Cottage Crafts <sup>07/2009</sup>

## Antique -/- Water Colour



|  |
|--|
| Pair of Framed Water Colours Signed E. M. Castelow   |
| Model: 493   |
| This pair of water colours are signed E. M. Castelow Both are river scapes with small boats. Fair condition, some light foxing on one picture. Both in original Oak frames. Known information 'Ethel M. Castelow' Exh. 1929 - 1930 at Walker Art Gallery - Liverpool Size to outside of frame 16.5" x 12.25" Overseas postage please contact for ESTIMATES<br>Note If you would prefer me to open them and remove glass for carriage please let me know. |
| £50.00   |



|  |
|--|
| Watercolour by G. Aitken Titled 'Harvest Time'   |
| Model: 498   |
| This fine watercolour by G. Aitken titled 'Harvest Time' is in excellent condition, appears to have been re-framed in recent years with elegant gilt frame. Cuttings from original backing pasted on reverse. Note Photograph taken with glass in place. (Glass will be removed before postage. Unless otherwise requested.) Approx. Size :- Frame ... inches :- Width = 19" x Height = 15" cm :- Width = 48cm x Height = 38cm Mount Apature... inches :- Width = 14.25" x Height 10" cm :- Width = 36cm x Height 25cm International buyers:- Please enquire about shipping costs. |
| £75.00   |

# Hope Cottage Crafts <sup>07/2009</sup>

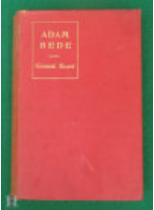
Under-Development



Abbey Road

Model: 270712

£0.00



Adam Bede

Model: 27071

£0.00



Art Nouveau

Model: 270738

£0.00



Bay City Rollers

Model: 27078

£0.00

# Hope Cottage Crafts <sup>07/2009</sup>



Brass Bottle Opener In Shape of Horses Head

Model: 27075

£0.00



Cake Serving Set

Model: 270724

£0.00



Collection of Ann Todd Letters

Model: 270721

£0.00



Collection of Beatrix Potter Books

Model: 270733

£0.00



Collection of Small China Ornaments

Model: 270723

£0.00

# Hope Cottage Crafts <sup>07/2009</sup>



E P N S Ashtray & Match Box Holder

Model: 27073

£0.00



elizabeth

Model: 270734

Size approx. 9" x 11.5"

£0.00



Elvis - 40 Greatest Hits

Model: 27076

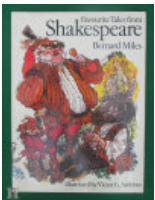
£0.00



Frank Sinatra

Model: 270713

£0.00



Fvourite Tales From Shakespeare

Model: 270730

£0.00

# Hope Cottage Crafts <sup>07/2009</sup>



|               |
|---------------|
| Gold Bracelet |
| Model: 27072  |
| £0.00         |



|              |
|--------------|
| Grease Album |
| Model: 27079 |
| £0.00        |



|               |
|---------------|
| Hat 2         |
| Model: 270728 |
| £0.00         |



|               |
|---------------|
| Hat 3         |
| Model: 270727 |
| £0.00         |



|               |
|---------------|
| Hat 4         |
| Model: 270726 |
| £0.00         |

# Hope Cottage Crafts <sup>07/2009</sup>



|               |
|---------------|
| Hat 5         |
| Model: 270725 |
| £0.00         |



|               |
|---------------|
| Hat1          |
| Model: 270729 |
| £0.00         |



|               |
|---------------|
| Herb Alpert   |
| Model: 270714 |
| £0.00         |



|  |
|--|
| Hexagonal Blue & White Bowl - Oriental Style |
| Model: 270715                                |
| £0.00  |

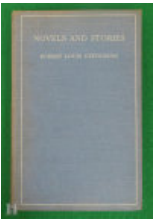


|               |
|---------------|
| Let It Be     |
| Model: 270713 |
| £0.00         |

# Hope Cottage Crafts <sup>07/2009</sup>



|                         |
|-------------------------|
| nepoleon                |
| Model: 270735           |
| Size approx. 9" x 11.5" |
| £0.00                   |



|                  |
|------------------|
| Novels & Stories |
| Model: 270732    |
| £0.00            |



|                               |
|-------------------------------|
| Pair Miniature Bisque Figures |
| Model: 270722                 |
| £0.00                         |



|                             |
|-----------------------------|
| Paper Mate Pen & Pencil Set |
| Model: 27074                |
| £0.00                       |



|               |
|---------------|
| Pots          |
| Model: 270740 |
| £0.00         |

# Hope Cottage Crafts <sup>07/2009</sup>



Saturday Night Fever

Model: 27077

£0.00



Shoe

Model: 2707104

£0.00



small spoons

Model: 1048

£0.00



Spoons

Model: 1036

£0.00



The Beatles 1962 - 1966 The Red Album

Model: 270710

£0.00

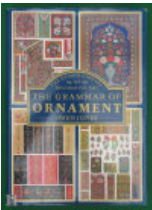
# Hope Cottage Crafts <sup>07/2009</sup>



The Beatles 1967 - 1970 The Blue Album

Model: 270711

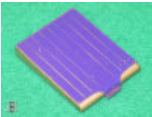
£0.00



The Grammar of Ornament

Model: 270737

£0.00



Vintage Brass & Enamelled Matchbook Holder

Model: 270718

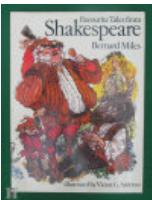
£0.00



Vintage Patience Card Set + Box and Instructions

Model: 270719

£0.00



World Steam Locomotives

Model: 270731

£0.00

# Hope Cottage Crafts <sup>07/2009</sup>

---

| Product name  | Category          | Page |
|---|-------------------|------|
| 10 Horse Brasses inc. John Peel                         | Brass             | 78   |
| 12 Postcards Depicting Japanese Birds & Plants          | Postcards         | 21   |
| 12 Vintage Novelty Postcards                            | Bitz & Bobz       | 65   |
| 2 Small Carved Buddha Toggles (carved from a nut)       | Bitz & Bobz       | 65   |
| 3 Brass Flying Swallows (Wall ornaments)                | Brass             | 78   |
| 3 Very Large Vintage Pyrex Jars - Containers - Carbouy  | Other             | 88   |
| 4 Antique Needlepoint Renaissance Lace Table Mats       | Textiles          | 72   |
| 5 Plates pertaining to Norfolk England                  | China             | 33   |
| A Pictorial History of The Talkies                      | Used              | 4    |
| A Round With 'Malice' Armchair Golf Game                | Bitz & Bobz       | 66   |
| A Suffolk Medley Booklet                                | New               | 3    |
| A Suffolk Medley - ebook                                | ebook             | 2    |
| A Thousand and One Limericks                            | Used              | 4    |
| Abberly Road  | Under-Development | 90   |
| Adam Bede   | Under-Development | 90   |
| Antique Czechoslovakia Lustrewear Jug                   | China             | 33   |
| Antique Stoneware Gin Bottle with Handle                | Stoneware         | 44   |
| Antique Silver Fish - unmarked                          | Silver            | 87   |
| Antique Writing Slope Desk On Stand                     | Restored          | 77   |
| Arlot On Cricket - His Writings On The Game             | Used              | 5    |
| Art Nouveau   | Under-Development | 90   |
| Asian - Oriental Hand Carved Hardwood Dragon            | Treen             | 73   |
| Asian Carved Folding Extending Book Rack                | Contemporary      | 74   |
| Bay City Rollers  | Under-Development | 90   |
| Beautiful Vintage Japanese Floral China Vase            | China             | 34   |
| Ben Hur By Lew Wallace Published by Fredrick Warne & Co | Used              | 5    |
| Black & Gold Twist Scarf                                | Scarves / Shawls  | 62   |
| Blue & White Porcelain Trinket Box Decorated With Flora | China             | 34   |
| Blue & White Egg Shaped Porcelain Ornament              | China             | 34   |
| Blue & White China Elephant Money Box                   | China             | 34   |
| BOTTICELLI - The Faber Gallery - Paperback Book         | Used              | 5    |
| Bradex Plate Tutankhamun No. 15-075-1.1                 | China             | 35   |
| Bradex Plate Ruslan & Ludmilla No. 60-v25-1.1           | China             | 35   |
| Brass Apple & Pear Trinket Boxes                        | Brass             | 78   |
| Brass Bell With Squirrel Handle                         | Brass             | 78   |
| Brass Bottle Opener In Shape of Horses Head             | Under-Development | 91   |

# Hope Cottage Crafts <sup>07/2009</sup>

---

|   |                   |    |
|---|-------------------|----|
| Brass Can Shaped Incense Burner                         | Brass             | 79 |
| Brass Cigarette Box Made In China                       | Brass             | 79 |
| Brass Door Knocker in shape of Horseshoe and Horse      | Brass             | 79 |
| Brass Frog - Toad Marked ELPEC made in London           | Brass             | 79 |
| Brass Horse Shoe, Good Luck From Walt Disney World      | Brass             | 80 |
| Brass Ornament Child On Grandpa's Knee                  | Brass             | 80 |
| Brass Orniment of Spanish Donkey With Pannier - Baskets | Brass             | 80 |
| Brass Pony & Trap Ornament                              | Brass             | 80 |
| Brass Puss In Boot Ornament                             | Brass             | 81 |
| Brass Torque Necklace with clip on Earings              | Brass             | 81 |
| British Birds by Doreen Roberts Set 1                   | Postcards         | 21 |
| British Birds by Doreen Roberts Set 2                   | Postcards         | 21 |
| Cake Serving Set  | Under-Development | 91 |
| Cantona On Cantona                                      | Used              | 6  |
| Chateaubriand by Andre Maurois                          | Used              | 6  |
| Collection of Small vintage buttons                     | Bitz & Bobz       | 67 |
| Collection of Small China Ornaments                     | Under-Development | 91 |
| Collection of 9 Enid Blyton Books                       | Used              | 7  |
| Collection of Embroidery books                          | Used              | 8  |
| Collection of Beatrix Potter Books                      | Under-Development | 91 |
| Collection of Ann Todd Letters                          | Under-Development | 91 |
| Colorful Mijoli Silk Jacket                             | Other             | 61 |
| Colourful Oriental Bone China Coffee Set Circa 1920's   | China             | 35 |
| Complete Stories & Poems of Edgar Allan Poe             | Used              | 8  |
| Copper And Brass Log Basket                             | Brass             | 81 |
| Cute Little Brass Owl                                   | Brass             | 81 |
| Czecho-Slovakia Victoria Combined Plate-Saucer + Cup    | China             | 35 |
| Davenport Plate Badger Family 1991 Limited Edition No.  | China             | 36 |
| Davenport Plate Dormice in The Hedgerow 1991 Limited Ed | China             | 36 |
| Davenport Plate Fox in The Barn 1991 Limited Edition No | China             | 36 |
| Davenport Plate Otters at Play 1991 Limited Edition No. | China             | 36 |
| David copperfiled, Nonesuch Dickens series 0-7156-3519- | Used              | 9  |
| E P N S Ashtray & Match Box Holder                      | Under-Development | 92 |
| Elegant China Plate Decorated With Peacocks             | China             | 37 |
| Elegant Brass Crane Ornament                            | Brass             | 82 |
| Elegant Brass Lion Figure                               | Brass             | 82 |
| Elegant Brass Swan                                      | Brass             | 82 |
| elizabeth   | Under-Development | 92 |
| Elvis - 40 Greatest Hits                                | Under-Development | 92 |

---

# Hope Cottage Crafts <sup>07/2009</sup>

|   |                   |    |
|---|-------------------|----|
| EPNS Milk Jug & Sugar Bowl                              | EPNS              | 84 |
| EPNS Sweet Tray   | EPNS              | 84 |
| Frank Sinatra   | Under-Development | 92 |
| Fvourite Tales From Shakespeare                         | Under-Development | 92 |
| Gold Bracelet   | Under-Development | 93 |
| Grease Album  | Under-Development | 93 |
| Great World War II Air Stories - ISBN 0 86273 046 5     | Used              | 9  |
| Green Alabasta Powder Bowl                              | Bric-a-Brac       | 68 |
| Green pottery money bank advertising 'Quosh'            | Pottery           | 43 |
| Hand Carved Wooden Tray - Asian - Sheesham Wood         | Other             | 71 |
| Hand Crocheted Tamoshanter - Dark Black                 | Hats & Caps       | 47 |
| Hand Crocheted Juliet Cap - Green Nylon                 | Hats & Caps       | 46 |
| Hand Crocheted Tamoshanter - Dark Green With Red Bobble | Hats & Caps       | 48 |
| Hand Crocheted Tamoshanter - Dark Green                 | Hats & Caps       | 48 |
| Hand Crocheted Juliet Cap - Pale Lilac                  | Hats & Caps       | 46 |
| Hand Crocheted Juliet Cap - Pastel Shades               | Hats & Caps       | 47 |
| Hand Crocheted Juliet Cap - Shreded Silk Strands        | Hats & Caps       | 47 |
| Hand Crocheted Tamoshanter - Blue With Red Bobble       | Hats & Caps       | 47 |
| Hand Crocheted Juliet Cap - Multi Pastel Coloured Cotto | Hats & Caps       | 46 |
| Hand Crocheted Green / Gold Boa Scarf                   | Scarves / Shawls  | 62 |
| Hand Crocheted Traditional Aran Yarn Shawl              | Scarves / Shawls  | 63 |
| Hand Crocheted Shawl 3ply Beige Shetland wool           | Scarves / Shawls  | 63 |
| Hand Crocheted Shawl Black Crushed Chenille             | Scarves / Shawls  | 63 |
| Hand Crocheted Blue / Grey Stole Scarf                  | Scarves / Shawls  | 62 |
| Hand Crocheted Shawl Multicoloured / mixed yarn         | Scarves / Shawls  | 63 |
| Handmade Smoking Cap - Lounging Hat - Multicoloured Woo | Hats & Caps       | 55 |
| Handmade Smoking Cap - Lounging Hat - Old Gold & Cream  | Hats & Caps       | 55 |
| Handmade Smoking Cap - Lounging Hat - Olive Green Faux  | Hats & Caps       | 56 |
| Handmade Smoking Cap - Lounging Hat - Red Silk          | Hats & Caps       | 57 |
| Handmade Smoking Cap - Lounging Hat - Red Faux Suede    | Hats & Caps       | 56 |
| Handmade Smoking Cap - Lounging Hat - Red & Black Velve | Hats & Caps       | 56 |
| Handmade Smoking Cap - Lounging Hat - Old Gold Merceris | Hats & Caps       | 56 |
| Handmade Smoking Cap - Lounging Hat - Multicoloured Flo | Hats & Caps       | 55 |
| Handmade Smoking Cap - Lounging Hat - Medieval Design C | Hats & Caps       | 54 |
| Handmade Smoking Cap - Lounging Hat - Medieval Design   | Hats & Caps       | 53 |
| Handmade Smoking Cap - Lounging Hat - Green Woven Fabri | Hats & Caps       | 53 |
| Handmade Smoking Cap - Lounging Hat - Multi-toned blue  | Hats & Caps       | 54 |
| Handmade Smoking Cap - Lounging Hat - Multicolour Ribbe | Hats & Caps       | 54 |
| Handmade Smoking Cap - Lounging Hat - Multicoloured Che | Hats & Caps       | 55 |

# Hope Cottage Crafts <sup>07/2009</sup>

---

|   |              |    |
|---|--------------|----|
| Handmade Smoking Cap - Lounging Hat - Multicolour Strip | Hats & Caps  | 54 |
| Handmade Smoking Cap - Lounging Hat - Red Tartan        | Hats & Caps  | 57 |
| Handmade Tripod Table Candle - Jardinier Stand          | Contemporary | 76 |
| Handmade Smoking Cap - Lounging Hat - Tann Coloured Vel | Hats & Caps  | 58 |
| Handmade Smoking Cap - Lounging Hat - Striped Brown & C | Hats & Caps  | 58 |
| Handmade Smoking Cap - Lounging Hat - Soft Jersey Mater | Hats & Caps  | 58 |
| Handmade Smoking Cap - Lounging Hat - Turquise & Heathe | Hats & Caps  | 59 |
| Handmade Smoking Cap - Lounging Hat - Wine Coloured Qui | Hats & Caps  | 59 |
| Handmade Smoking Cap - Lounging HatFaux Leopard Skin    | Hats & Caps  | 59 |
| Handmade Smoking Cap - Lounging Hat w/ snake resting on | Hats & Caps  | 59 |
| Handmade Smoking Cap - Lounging Hat - Shades of Green S | Hats & Caps  | 58 |
| Handmade 3 Legged Stool in Reclaimed Ash & Pitch Pine   | Contemporary | 74 |
| Handmade Tripod Table Jardinier Stand                   | Contemporary | 76 |
| Handmade Smoking Cap - Lounging Hat - Ribon Based Boucl | Hats & Caps  | 57 |
| Handmade Solid & Burr Walnut Veneer Occasional Table    | Contemporary | 75 |
| Handmade Reproduction Tripod Wine Table. Very Small     | Contemporary | 75 |
| Handmade Copy of Early Colonial Courting Mirror         | Contemporary | 74 |
| Handmade Reproduction Pine Settle Inc. reclaimed wood   | Contemporary | 75 |
| Handmade Smoking Cap - Lounging Hat - Red, Blue & Green | Hats & Caps  | 57 |
| Handmade Smoking Cap - Lounging Hat - Green & Multicolo | Hats & Caps  | 53 |
| Handmade Smoking Cap - Lounging Hat - Black Velvet      | Hats & Caps  | 49 |
| Handmade Smoking Cap - Lounging Hat - Black Wool + Deco | Hats & Caps  | 49 |
| Handmade Smoking Cap - Lounging Hat - Black Wool + Meta | Hats & Caps  | 50 |
| Handmade Smoking Cap - Lounging Hat - Black Soft Jersey | Hats & Caps  | 49 |
| Handmade Smoking Cap - Lounging Hat - Black Silk        | Hats & Caps  | 49 |
| Handmade Smoking Cap - Lounging Hat - Green & Blue Tart | Hats & Caps  | 53 |
| Handmade Smoking Cap - Lounging Hat & Jacket - Blue & R | Hats & Caps  | 48 |
| Handmade Smoking Cap - Lounging Hat & Jacket - Red & Ye | Hats & Caps  | 48 |
| Handmade Smoking Cap - Lounging Hat - Blue, Turquise &  | Hats & Caps  | 50 |
| Handmade Smoking Cap - Lounging Hat - Black Wool + Meta | Hats & Caps  | 50 |
| Handmade Smoking Cap - Lounging Hat - Brown & Gold Wool | Hats & Caps  | 50 |
| Handmade Smoking Cap - Lounging Hat - Dark Green Tartan | Hats & Caps  | 52 |
| Handmade Smoking Cap - Lounging Hat - Dark Olive Green  | Hats & Caps  | 52 |
| Handmade Smoking Cap - Lounging Hat - Floral & Paisley  | Hats & Caps  | 52 |
| Handmade Smoking Cap - Lounging Hat - Dark Blue Rayon   | Hats & Caps  | 51 |
| Handmade Smoking Cap - Lounging Hat - Dark Green        | Hats & Caps  | 52 |
| Handmade Smoking Cap - Lounging Hat - Chocolate Brown V | Hats & Caps  | 51 |
| Handmade Smoking Cap - Lounging Hat - Cream & Tweed Cot | Hats & Caps  | 51 |
| Handmade Smoking Cap - Lounging Hat - Cream Arran Yarn  | Hats & Caps  | 51 |

---

# Hope Cottage Crafts <sup>07/2009</sup>

---

|   |                   |    |
|---|-------------------|----|
| Handmrocheted Victorian Style Sports Cap                | Hats & Caps       | 60 |
| Hat 2   | Under-Development | 93 |
| Hat 3   | Under-Development | 93 |
| Hat 4   | Under-Development | 93 |
| Hat 5   | Under-Development | 94 |
| Hat1  | Under-Development | 94 |
| Herb Alpert   | Under-Development | 94 |
| Hexagonal Blue & White Bowl - Oriental Style            | Under-Development | 94 |
| Hollow Cast Brass Horse Ornament                        | Brass             | 82 |
| Home Sweet Home The Best of Good Housekeeping 1922 - 1  | Used              | 10 |
| Imari Style Decorative Plate                            | Pottery           | 43 |
| In Tune with The Infinite by Ralph Waldo Trine 1901     | Used              | 10 |
| John McGovren Glamorous Cars                            | Used              | 11 |
| Kodak Bantam Coloursnap, Vintage Camera                 | Cameras           | 69 |
| Ladies & Gents Quick Brew Promotional Watches           | Bitz & Bobz       | 67 |
| Ladybird series 401 Complete set of 14 Books            | Used              | 11 |
| Large Blue & White Vase                                 | China             | 37 |
| Let It Be   | Under-Development | 94 |
| Lovely Piece of Clear Art Glass                         | Glass             | 41 |
| Miniature Procelaine Cup & Saucer decorated Rose & Gilt | China             | 38 |
| Miniature Incense Box, Containing 5 Incense Cones       | Treen             | 73 |
| Miniature Coffee Set In Presentation Box                | China             | 37 |
| Mottled Blue, White & Red Art Glass Swan Dish           | Glass             | 41 |
| nepoleon  | Under-Development | 95 |
| No 2 Cartridge Hawk-Eye model B Vintage Camera          | Cameras           | 69 |
| Novels & Stories  | Under-Development | 95 |
| Oxford Manual of Style                                  | Used              | 12 |
| Pair Miniature Bisque Figures                           | Under-Development | 95 |
| Pair of Framed Water Colours Signed E. M. Castelow      | Water Colour      | 89 |
| Pair of Brass Horse Figures                             | Brass             | 83 |
| Pair of Cute Porcelain Dalmation figures                | China             | 38 |
| Pair of vintage ASEDA Jack in the pulpit blue glass vas | Glass             | 41 |
| Pair of red Vintage Tap Dance Shoes Anello & Davide     | Footwear          | 45 |
| Pale Blue / Grey Twist Scarf                            | Scarves / Shawls  | 64 |
| Paper Mate Pen & Pencil Set                             | Under-Development | 95 |
| Peter The Whaler by W H G Kingston                      | Used              | 12 |
| Postcards depicting Native Americans & Landscapes Set 4 | Postcards         | 25 |
| Postcards depicting Native Americans & Landscapes Set 3 | Postcards         | 24 |
| Postcards depicting Native Americans & Landscapes Set 5 | Postcards         | 25 |

---

# Hope Cottage Crafts <sup>07/2009</sup>

|   |                   |    |
|---|-------------------|----|
| Postcards depicting Native Americans & Landscapes Set 6 | Postcards         | 25 |
| Postcards depicting Native Americans & Landscapes Set 7 | Postcards         | 26 |
| Postcards depicting Native Americans & Landscapes Set 2 | Postcards         | 24 |
| Postcards depicting Native Americans & Landscapes Set 1 | Postcards         | 24 |
| Postcards Depicting Art Deco Fashion Set 3              | Postcards         | 22 |
| Postcards Depicting Art Deco Fashion Set 2              | Postcards         | 22 |
| Postcards Depicting Art Deco Fashion Set 4              | Postcards         | 23 |
| Postcards Depicting Art Deco Fashion Set 5              | Postcards         | 23 |
| Postcards Depicting Art Deco Fashion Set 6              | Postcards         | 23 |
| Postcards Depicting Art Deco Fashion Set 1              | Postcards         | 22 |
| Postcards of British naval dress circa 1748 - 1939      | Postcards         | 26 |
| Postcards of Various Wild Life Prints Set 12            | Postcards         | 30 |
| Postcards of Various Wild Life Prints Set 5             | Postcards         | 31 |
| Postcards of Various Wild Life Prints Set 11            | Postcards         | 29 |
| Postcards of Various Wild Life Prints Set 2             | Postcards         | 30 |
| Postcards of Various Wild Life Prints Set 6             | Postcards         | 31 |
| Postcards of Various Wild Life Prints Set 8             | Postcards         | 32 |
| Postcards of Various Wild Life Prints Set 7             | Postcards         | 32 |
| Postcards of Various Wild Life Prints Set 3             | Postcards         | 30 |
| Postcards of Various Wild Life Prints Set 10            | Postcards         | 29 |
| Postcards of Various Wild Life Prints Set 1             | Postcards         | 29 |
| Postcards of Suffolk Scenes Set 1                       | Postcards         | 27 |
| Postcards of Haiku Poem and Photograph Set 3            | Postcards         | 27 |
| Postcards of Haiku Poem and Photograph Set 2            | Postcards         | 27 |
| Postcards of Suffolk Scenes Set 2                       | Postcards         | 28 |
| Postcards of Haiku Poem and Photograph Set 1            | Postcards         | 26 |
| Postcards of Suffolk Scenes Set 4                       | Postcards         | 28 |
| Postcards of Suffolk Scenes Set 3                       | Postcards         | 28 |
| Postcards of Various Wild Life Prints Set 4             | Postcards         | 31 |
| Postcards of Various Wild Life Prints Set 9             | Postcards         | 32 |
| Pots  | Under-Development | 95 |
| Premier League Football Review of The Season 1997/1998  | Used              | 13 |
| Quantity of Tapestry Wool +Embroidery Frame             | Other             | 88 |
| Reflections On Madison County by Mark F Heffron         | Used              | 13 |
| Reproduction Handmade Pine Stool, Rough Cut             | Contemporary      | 76 |
| Richard's Ultimate Bicycle Book                         | Used              | 14 |
| Ricoh KR-10 Camera& Sigma 39-80 Lens                    | Cameras           | 69 |
| Royal Doulton China Plate 'The Embroidressr' No. 539B   | China             | 39 |
| Royal Doulton China Plate 'The Candle Maker' No. 8714A  | China             | 38 |

# Hope Cottage Crafts <sup>07/2009</sup>

---

|   |                   |    |
|---|-------------------|----|
| Royal doulton seriesware plate d6473 Vermillion Lake    | China             | 39 |
| Royal Famly Yearbook                                    | Used              | 15 |
| Saturday Night Fever                                    | Under-Development | 96 |
| Set of Six Miniature Brass Goblets in Display Box       | Brass             | 83 |
| Shoe  | Under-Development | 96 |
| Shoot Monthly Anual 2003                                | Used              | 15 |
| Silver Pendant  | Silver            | 87 |
| Small Handmade 3 Legged Stool in Mahogany               | Contemporary      | 76 |
| Small Silver Plated Vintage Trophy On Wooden Stand      | Plated-ware       | 86 |
| small spoons  | Under-Development | 96 |
| Small Wooden Trinket Box Decorated With Brass           | Treen             | 73 |
| Solid Pewter Tankard                                    | Pewter            | 85 |
| Spoons  | Under-Development | 96 |
| Stoneware Pottery Tankard F.L.S. Frederikshavn          | Stoneware         | 44 |
| Superstars of The World Cup 2002                        | Used              | 16 |
| Superstars 78 Annual                                    | Used              | 16 |
| The Adventures of Sherlock Holmes                       | Used              | 17 |
| The Beatles 1962 - 1966 The Red Album                   | Under-Development | 96 |
| The Beatles 1967 - 1970 The Blue Album                  | Under-Development | 97 |
| The Book of Snooker Disasters & Bizarre Records - Steve | Used              | 18 |
| The Book of Ages - Desmond Morris                       | Used              | 17 |
| The Complete Who's Who of Test Cricket                  | Used              | 18 |
| The Duchovny Files - Paul Mitchell                      | Used              | 19 |
| The Falklands War - 14 weekly parts in folder (complete | Used              | 19 |
| The Grammar of Ornament                                 | Under-Development | 97 |
| The Victory Ship Brass Cork Screw                       | Brass             | 83 |
| Van Gogh by Pierre Cabanne                              | Used              | 20 |
| Vintage Brass & Enameled Matchbook Holder               | Under-Development | 97 |
| Vintage Blue Bubble Glass Vase                          | Glass             | 42 |
| Vintage Patience Card Set + Box and Instructions        | Under-Development | 97 |
| Vintage Blur & Green Bubble Vase (Soda Glass)           | Glass             | 42 |
| Vogue Complete Diet & Exercise                          | Used              | 20 |
| Watercolour by G. Aitken Titled 'Harvest Time'          | Water Colour      | 89 |
| Wedgwood Jasper Ware Pale Blue & White Lighter & Ashtra | China             | 39 |
| Wedgwood plate From the 'Village Green' Series The Stea | China             | 40 |
| Wedgwood plate From the 'Village Green' Series Harvest  | China             | 39 |
| Yashica FX-103 Camera + Original Box & Manual           | Cameras           | 70 |
| World Steam Locamotives                                 | Under-Development | 97 |

---